

2021 FORD

MUSTANG[®]



THERE'S NO POWER LIKE PONY POWER.

Open roads. Closed tracks. Drag strips and long straightaways. This legendary icon thrives on them all. A high-revving celebration of American muscle, the Ford Mustang is meant to be driven. Hard. Over the chicanes and blind corners of the world's premier road tracks to any twisty stretch of blacktop near you. 56 years of Pony power brings us these heart-pounding choices. The Mustang EcoBoost model gets you started in all things Mustang. The mighty Mustang GT Premium pushes your adrenaline level to the redline. And with 760 thunderous horsepower,¹ the 2021 Shelby GT500 is the most powerful street-legal Mustang. Ever. So buckle up for the ride of your life. From this stable, 2021 will move at breathtaking speed.



ECOBOOST | ECOBOOST PREMIUM

EcoBoost Premium. Velocity Blue Metallic. Available equipment.



GT | GT PREMIUM

GT Premium Convertible. Iconic Silver Metallic. Black Accent Package. Available equipment.



SHELBY GT500

Twister Orange Metallic Tri-coat.² U.S. package shown.

¹ Horsepower and torque ratings based on premium fuel per SAE J1349® standard. Your results may vary. Horsepower and torque are independent attributes and may not be achieved simultaneously. ² Additional charge. GT500 and Shelby are registered trademarks of Carroll Hall Shelby Trust.

2021 FORD MUSTANG® | ECOBOOST® | ECOBOOST PREMIUM | GT | GT PREMIUM | SHELBY® GT500®

caribe.ford.com | centroamerica.ford.com





JOYSTICK.

Ford Mustang is a visceral thrill ride that turns ordinary days into extraordinary ones. Start with the gear shifter in the fun-to-pedal 6-speed manual, the most tactile connection to the Mustang experience. There's also the unmistakable V8 rumble of Mustang GT to the 4-wheel, fully independent suspension that delivers precise handling. 56 years after taking the World's Fair by storm in New York, this Pony still runs wild.

Every Mustang generates its own set of thrills, starting with EcoBoost and ending with the exclamation point that is the 2021 Shelby GT500. From any angle, there's no mistaking it. The long, seductive hood – and taut, distinctive tail with sequential, tri-bar turn signals – are Mustang signatures that get anyone's blood pumping. As does the blistering performance.

AVAILABLE MAGNERIDE® DAMPING SYSTEM

Provides lightning-quick responsiveness to changing road conditions.

AVAILABLE SELECTABLE DRIVE MODES

Allow you to activate predefined powertrain and chassis calibrations.

6-SPEED MANUAL SHIFTER

Short-throw and fun to put through its paces.

EcoBoost. Grabber Yellow. Available equipment.
MagneRide is a trademarked technology of BWI Group.

2021 FORD MUSTANG® | ECOBOOST® | ECOBOOST PREMIUM | GT | GT PREMIUM | SHELBY® GT500®

caribe.ford.com | centroamerica.ford.com



STANDARD ON EVERY FORD MUSTANG

MECHANICAL

Electronic line-lock (track use only)
Launch control (manual transmission only)
Selectable-effort electric power-assisted steering (Normal, Sport, Comfort)
Suspension – Front: MacPherson strut with stabilizer bar; rear: independent integral link with stabilizer bar
Tire inflator and sealant kit

COMFORT & CONVENIENCE

Auto-dimming rearview mirror
Dual-zone electronic automatic temperature control
Illuminated visor mirrors
Intelligent Access with push-button start
Power windows with global open and front one-touch-up/-down feature
SYNC® 3 with 8" LCD capacitive touchscreen, 911 Assist,® AppLink,® Apple CarPlay® compatibility, Android Auto™ compatibility, and 2 smart-charging USB ports
Tilt/telescoping steering column
TrackApps® located in instrument cluster

APPEARANCE

Headlamps with signature lighting, and LED taillamps with sequential turn signals
Power sideview mirrors with integrated blind spot mirrors
Variable-intermittent windshield wipers

FORD CO-PILOT360™ TECHNOLOGY³

AdvanceTrac™ electronic stability control
Autolamp (Automatic On/Off Headlamps) with windshield wiper activation
BLIS® (Blind Spot Information System) with Cross-Traffic Alert (LHD)
Rear View Camera

SAFETY & SECURITY

Personal Safety System™ with dual-stage front airbags⁴
Driver's knee, glove-box-door-integrated knee, and front-seat side airbags⁴
Side-curtain airbags⁴ (fastback only)
Belt-Minder® front safety belt reminder
Enhanced Security Package: Active Anti-Theft System, electronic-locking center console, electronic steering column lock, and wheel locks
Individual Tire Pressure Monitoring System (excludes available spare)
MyKey® technology to help encourage responsible driving (LHD)
Perimeter alarm
SecuriLock® Passive Anti-Theft System
SOS Post-Crash Alert System™
Thatcham Security System (RHD)

TORQUE (LB.-FT.)¹
HORSEPOWER¹

**2.3L
ECOBOOST**

Standard on EcoBoost and
EcoBoost Premium

310

350

**5.0L
Ti-VCT V8**

Standard on GT and
GT Premium

460

420

<4

0-60 mph
in under 4 seconds²

10

10-Speed SelectShift®
Automatic Transmission

6

6-Speed Manual
Transmission

1. Horsepower and torque ratings based on premium fuel per SAE J1349® standard. Your results may vary. Horsepower and torque are independent attributes and may not be achieved simultaneously.
2. Mustang GT with GT Performance Package, 10-speed automatic and Drag Strip mode. Figures based on internal Ford data. 3. Driver-assist features are supplemental and do not replace the driver's attention, judgment and need to control the vehicle. It does not replace safe driving. See owner's manual for system limitations. 4. Always wear your safety belt and follow airbag warning label instructions.
Android Auto is a trademark of Google Inc. Apple CarPlay is a trademark of Apple Inc., registered in the U.S. and other countries.

2021 FORD MUSTANG® | ECOBOOST® | ECOBOOST PREMIUM | GT | GT PREMIUM | SHELBY® GT500®

caribe.ford.com | centroamerica.ford.com



INTERIOR DIMENSIONS (mm)

	Front
Head room (Fastback)	955
Head room (Convertible)	954
Leg room (max.)	1,146
Hip room	1,395
Shoulder room	1,430

This cabin rocks. Starting with an available thunderous B&O Sound System that sends 1,000 watts of digitally processed sound through 12 high-performance speakers, plus a trunk-mounted subwoofer. Steering column: tilts and telescopes to better fit your needs. Even the placement of the short-throw 6-speed manual transmission gear shifter allows for open access to controls. Like toggle switches for the available Selectable Drive Modes. Steering wheel-mounted controls for the available digital instrument cluster. And so much more. Designed and engineered to heighten your connection to the road – Ford Mustang also optimizes your enjoyment of it.



AVAILABLE HEATED
STEERING WHEEL

AVAILABLE RECARO® SPORT
LEATHER-TRIMMED
FRONT SEATS

AVAILABLE HEATED FRONT
SEATS AND SIDEVIEW
MIRRORS

Screen display varies by market.

GT Premium. California Special Package. Ebony leather-trimmed interior. Available equipment.

BANG & OLUFSEN and B&O are registered trademarks of Bang & Olufsen Group. RECARO is a registered trademark of RECARO Beteiligungs-GmbH.

2021 FORD MUSTANG® | ECOBOOST® | ECOBOOST PREMIUM | GT | GT PREMIUM | SHELBY® GT500®

caribe.ford.com | centroamerica.ford.com





Screen display varies by market.

DESIGN YOUR DISPLAY.

Personalize Ford Mustang as often as you'd like with the available customizable 12" color LCD instrument cluster. Through the Pony button on the steering wheel, you decide what's displayed: any combination of 1 to 3 virtual gauges (choose from 8), Exhaust mode, TrackApps,® a Performance Shift Indicator (3 types with configurable rpm), launch control and more. Enhance it further with MyColor.® Set your primary, secondary and ambient lighting colors. The cluster, like everything else Mustang, is fast. And oh so responsive.

MUSTANG TRACKAPPS



LIGHT 'EM UP. At the track. In the cluster. With standard electronic line-lock, you can "heat up" the Mustang rear tires. As they smoke outside, you'll see them smokin' here as well.



NO STOPWATCH NEEDED. With the Lap Timer, record your time and average speed at 3 separate tracks. Store up to 100 sessions (a session is 25 laps) in Track Mode.



1,320' OF EXHILARATION. Start your launch with the iconic "Christmas tree." 3-2-1. Gone! The Acceleration Timer shows you how quickly you reach the 1/4 mile.

COMMAND THE ROAD

WITH FORD CO-PILOT360™ TECHNOLOGY.



FORD CO-PILOT360 TECHNOLOGY

From the driveway to the highway, we can all use more confidence at the wheel. These standard and available driver-assist technologies are about supplementing your driving skills.¹ Helping you feel confidently in command. Equip your Ford Mustang with available Ford Co-Pilot360 Technology, and it can encourage your alertness, help direct you to return to your lane, and even detect vehicles in your blind spots.

These smart features can help you with changing lanes, backing up and more. In doing so, they help make driving more enjoyable:

- **AUTOLAMP (AUTOMATIC ON/OFF HEADLAMPS) (LHD)**
- **BLIS® (BLIND SPOT INFORMATION SYSTEM) WITH CROSS-TRAFFIC ALERT**
- **REAR VIEW CAMERA**

ADDITIONAL TECHNOLOGY

From navigating stop-and-go traffic to finding your way with ease, get help from these available features:

- **ADAPTIVE CRUISE CONTROL**
- **LANE-KEEPING SYSTEM**
- **PRE-COLLISION ASSIST WITH AUTOMATIC EMERGENCY BRAKING²**
- **VOICE-ACTIVATED TOUCHSCREEN NAVIGATION SYSTEM**

GT Premium Convertible. Iconic Silver Metallic. California Special Package. Available equipment. **1.** Driver-assist features are supplemental and do not replace the driver's attention, judgment and need to control the vehicle. It does not replace safe driving. See owner's manual for system limitations. **2.** Pre-Collision Assist with Automatic Emergency Braking can detect pedestrians, but not in all conditions and does not replace safe driving. See owner's manual for system limitations.

2021 FORD MUSTANG® | ECOBOOST® | ECOBOOST PREMIUM | GT | GT PREMIUM | SHELBY® GT500®

caribe.ford.com | centroamerica.ford.com



AT YOUR SERVICE.

This available vibrant 8" touchscreen is the command center of available SYNC® 3 voice-activated technology,¹ which integrates your paired mobile phone with Ford Mustang. Make calls. Send and receive text messages. And so much more. Just swipe left or right, or use simple voice commands, to help ensure your life doesn't miss a beat.



SPEAK AND SYNC LISTENS

With your voice and your choice of display. Available SYNC 3 voice-activated technology¹ connects your tech with your Mustang. SYNC AppLink^{®2} gives you voice control of compatible mobile apps including Apple CarPlay[®] and Android Auto.^{TM3} Rather see your phone's familiar interface³ on the big screen? Take your pick.



LOVES ROAD TRIPS

The available Voice-Activated Touchscreen Navigation System⁴ delivers turn-by-turn directions and vivid 3-D maps on the SYNC 3 touchscreen. Pinch-to-zoom capability allows for a closer look.

Screen display varies by market.

1. Don't drive while distracted. Use voice-operated systems when possible; don't use handheld devices while driving. Some features may be locked out while the vehicle is in gear. Not all features are compatible with all phones. Functionality varies by market. **2.** Certain restrictions, 3rd-party terms and data rates may apply. See your Ford Dealer for details. Commands may vary by phone and AppLink software. **3.** Requires phone with active data service and compatible software. SYNC does not control 3rd-party products while in use. 3rd parties are solely responsible for their respective functionality. **4.** Availability varies by market.

2021 FORD MUSTANG® | ECOBOOST® | ECOBOOST PREMIUM | GT | GT PREMIUM | SHELBY® GT500®

caribe.ford.com | centroamerica.ford.com



TURBOCHARGED TENACITY. Ford Mustang EcoBoost is designed to custom-fit the way you drive down to the very last detail. Choose the sleek fastback or drop-top convertible. Try and pick a favorite among 5 different wheel choices, from standard 18" machined-face aluminum with high-gloss Ebony Black-painted pockets, to the 19" machined-face aluminum rims with Dark Tarnish-painted pockets included with the Wheel & Stripe Package. Or appeal to the racer inside with the available over-the-top racing stripes. From outside to inside to under the hood, there are so many ways you can make Mustang EcoBoost your own.



ECOBOOST

2.3L ECOBOOST I-4 (LHD) FASTBACK OR CONVERTIBLE

INCLUDES STANDARD FEATURES, PLUS:

- 6-speed manual transmission
- 3.31 limited-slip rear differential
- 12.6" vented disc brakes with 2-piston front calipers
- B&O Sound System with single-CD player, 12 speakers and subwoofer
- 6-way power driver's seat with power lumbar
- 4-way power front-passenger seat
- Silver Arrow aluminum instrument panel trim
- Reverse Sensing System
- Dual bright exhaust with rolled tips

OPTIONS

ECOBOOST / ECOBOOST PREMIUM

- 10-speed SelectShift® automatic transmission with steering wheel-mounted paddle shifters, 3.15 limited-slip rear differential, Remote Start System² and leather-wrapped shifter
- Compact spare wheel and tire²
- Over-the-top racing stripes²
- Premium floor liners (LHD)
- Spoiler delete² (LHD)
- Voice-Activated Touchscreen Navigation System with pinch-to-zoom capability²



18" x 8"
Machined-Face Aluminum with High-Gloss Ebony Black-Painted Pockets
[Standard]



18" x 8"
Machined-Face Aluminum with Low-Gloss Ebony Black-Painted Pockets¹
[Optional]



19" x 8.5"
Polished Aluminum²
[Optional]



Available equipment shown. 1. Availability varies by market. 2. Restrictions may apply. See your dealer for details.



PREMIUM STYLE. Ford Mustang EcoBoost Premium delivers mightily on performance. Choose the fun-to-pedal 6-speed manual. Or the smooth-shifting available 10-speed SelectShift® automatic. Choose from 6 packages, including the Pony Package or the Black Accent Package. Style? That's covered as well. Consider the 3 unique available instrument panel trim choices. Pick from a range of select options, including available 20" premium painted aluminum wheels and available RECARO® sport leather-trimmed front seats. With EcoBoost Premium, the power to make it your Mustang is capably in your hands.



19" x 9"
Low-Gloss Ebony Black-Painted Aluminum
[Standard RHD]

ECOBOOST PREMIUM

2.3L ECOBOOST I-4 FASTBACK OR CONVERTIBLE

EQUIPMENT GROUP 200A

INCLUDES SELECT ECOBOOST FEATURES, PLUS:

- Selectable Drive Modes with 4-gang toggle switch pack (Normal, Sport+, Track, Drag Strip, Snow/Wet) (RHD)
- 6-way power front-passenger seat (RHD)
- 6-way power, heated and cooled front seats with driver-seat power lumbar (LHD)
- 12" configurable LCD digital instrument cluster with MyColor® (RHD)
- Aluminum accelerator, brake and clutch pedals
- Ambient lighting with MyColor
- Angled Brush aluminum instrument panel trim (LHD)
- Bright-finish door speaker surrounds
- Heated steering wheel (RHD)
- Illuminated door-sill scuff plates
- Premium door trim including soft rollover
- Halogen fog lamps (RHD)
- Heated sideview mirrors with integrated turn signal indicators (LHD)
- Heated power-folding sideview mirrors with integrated turn signal indicators (RHD)
- LED fog lamps (LHD)
- Decklid spoiler (LHD)
- Pony projection lamps
- EcoBoost Performance Package: includes larger radiator, larger brake rotors with 4-piston front calipers, dark aluminum instrument panel trim, spoiler delete, and limited-slip rear differential (RHD)

OPTIONS

INCLUDES ECOBOOST OPTIONS, PLUS:

- MagneRide® Damping System (RHD)¹
- Heated and cooled front seats (RHD)¹
- RECARO sport leather-trimmed front seats¹
- Black-painted roof (RHD)¹
- Performance rear wing spoiler (RHD)¹



18" x 8"
Machined-Face Aluminum with High-Gloss Ebony Black-Painted Pockets
[Standard LHD]



19" x 9"
Luster Nickel-Painted Forged-Aluminum
[Optional RHD]



19" x 8.5"
Polished Aluminum¹
[Optional LHD]



20" x 9"
Premium Painted Aluminum¹
[Optional LHD]

Available equipment shown. 1. Restrictions may apply. See your dealer for details.



ECOBOOST + ECOBOOST PREMIUM PACKAGES¹

BLACK ACCENT PACKAGE (LHD)

ECOBOOST / ECOBOOST PREMIUM

- 19" x 8.5" Ebony Black-painted aluminum wheels
- Black-painted roof, badging and decklid spoiler



FORD SAFE AND SMART™ PACKAGE (LHD)/ CADS GEN3 PACK (RHD)

ECOBOOST PREMIUM

- Adaptive Cruise Control & Forward Collision Warning with Brake Support
- Pre-Collision Assist with Pedestrian Detection and Automatic Emergency Braking (AEB)
- Auto High-Beam Headlamps
- Lane-Keeping System
- Rain-Sensing Windshield Wipers



Screen display varies by market.

CARBON SPORT INTERIOR PACKAGE (LHD)

ECOBOOST PREMIUM

- Alcantara® seat and door-trim panel inserts
- Carbon fiber instrument panel trim and shift knob

PONY PACKAGE (LHD)

ECOBOOST PREMIUM

- 19" x 8.5" polished aluminum wheels
- Unique Pony grille, side stripes, tri-bar Pony badge
- Bright beltline moldings and window surrounds (fastback)
- Premium carpeted front floor mats with embroidered Pony logo in Ebony



WHEEL & STRIPE PACKAGE (LHD)

ECOBOOST / ECOBOOST PREMIUM

- 19" x 8.5" machined-face aluminum wheels with Dark Tarnish-painted pockets
- Hood and side stripes



PREMIUM PLUS PACKAGE (LHD) (Equipment Group 201A)

ECOBOOST PREMIUM

- 12" configurable LCD digital instrument cluster with MyColor®
- Heated steering wheel
- Voice-Activated Touchscreen Navigation System
- **Premier Trim with Color Accent Group:** color-accented leather-trimmed front seats, instrument panel trim and unique door-trim inserts; Linked Graphite aluminum instrument panel trim; wrapped center console and knee bolsters with color accent stitching; shift boot with accent stitching; and stitched center console lid



¹ Restrictions may apply. See your dealer for details.
Alcantara is a registered trademark of Alcantara S.p.A., Italy.

2021 FORD MUSTANG® | ECOBOOST® | ECOBOOST PREMIUM | GT | GT PREMIUM | SHELBY® GT500®

caribe.ford.com | centroamerica.ford.com



HEAR IT ROAR. They'll know you're coming. And when you leave them in your dust. That wicked 5.0L V8 acceleration rumble defines the Ford Mustang GT model. There's nothing quite like it. You can even keep that signature sound to a minimum with Quiet Start – when heading out at 5 a.m., for instance – to keep you in good graces with neighbors. This high-revving V8 features a dual-injection system and plasma transferred wire arc (PTWA) spray-bore cylinder-lining technology to deliver 460 horsepower² along with 420 lb.-ft. of torque.² That's just the beginning of its charm. Passionate performance from this iconic fastback includes hitting the 0-60 mark in under 4 seconds.³ A 4-wheel, fully independent suspension delivers excellent road feel and precise handling. You'll enjoy making this beast howl. Every chance you get.

GT¹



**5.0L Ti-VCT V8 (LHD)
FASTBACK**

INCLUDES SELECT STANDARD FEATURES, PLUS:

- 6-speed manual transmission with dual mass flywheel, twin-disc clutch, and Rev Matching
- 3.55 limited-slip rear differential
- Larger brake rotors with 4-piston front calipers
- Engine oil cooler
- Reverse Sensing System
- Selectable Drive Modes with 4-gang toggle switch pack (Normal, Sport+, Track, Drag Strip, Snow/Wet)
- 6-way power driver's seat with power lumbar
- 4-way power front-passenger seat
- 4.2" LCD message center screen
- Ambient lighting with MyColor[®]
- B&O Sound System with single-CD player, 12 speakers and subwoofer
- Silver Arrow aluminum instrument panel trim
- Dual exhaust with quad tips
- LED fog lamps
- Raised blade-style decklid spoiler
- Unique high-gloss Black-painted grille
- Unique rear valance

**OPTIONS
GT / GT PREMIUM**

- 10-speed SelectShift[®] automatic transmission with steering wheel-mounted paddle shifters, 3.15 limited-slip rear differential (LHD), 3.55 limited-slip rear differential (RHD), Remote Start System (LHD)¹ and leather-wrapped shifter
- 3.55 limited-slip rear differential (requires automatic)⁴
- Active Valve Performance Exhaust System
- Compact spare wheel and tire⁴
- MagneRide[®] Damping System⁴
- Over-the-top racing stripes⁴
- Premium floor liners (LHD)
- Spoiler delete (LHD)⁴
- Voice-Activated Touchscreen Navigation System⁴ with pinch-to-zoom capability



18" x 8"
Machined-Face Aluminum with High-Gloss Ebony Black-Painted Pockets [Standard]



18" x 8"
Machined-Face Aluminum with Low-Gloss Ebony Black-Painted Pockets⁴ [Optional]



Available equipment shown. **1.** Availability varies by market. **2.** Horsepower and torque ratings based on premium fuel per SAE J1349[®] standard. Your results may vary. Horsepower and torque are independent attributes and may not be achieved simultaneously. **3.** Mustang GT with GT Performance Package, 10-speed automatic and Drag Strip mode. Figures based on internal Ford test data. **4.** Restrictions may apply. See your dealer for details.



PREMIUM GT PERFORMANCE. With the available GT Performance Package, you'll get Brembo™ 6-piston front calipers with larger brake rotors, a TORSEN® limited-slip differential, an oil pressure and vacuum Gauge Pack, heavy-duty front springs, an engine compartment K-brace, unique chassis tuning, an upsized rear sway bar, and so much more. Inside, Premium models add an Angled Brush aluminum instrument panel finish, leather-trimmed front seats, aluminum foot pedals, illuminated door-sill scuff plates, SYNC® 3 and SiriusXM.® Interior upgrades include an available heated steering wheel; available accent-color stitching on the seats, instrument panel, center console lid, wrapped knee bolsters and shifter boot; and more.



GT PREMIUM

5.0L TI-VCT V8
FASTBACK OR CONVERTIBLE

INCLUDES SELECT GT FEATURES, PLUS:

- Active Valve Performance Exhaust System (RHD)
 - 6-way power front-passenger seat (RHD)
 - 6-way power, heated and cooled front seats with driver-seat power lumbar (LHD)
 - 12" configurable LCD digital instrument cluster with MyColor® (RHD)
 - Ambient lighting with MyColor
 - Angled Brush aluminum instrument panel trim (LHD)
 - Heated steering wheel (RHD)
 - Halogen fog lamps (RHD)
 - Heated sideview mirrors with integrated turn signal indicators (LHD)
 - Heated power-folding sideview mirrors with integrated turn signal indicators (RHD)
 - LED fog lamps (LHD)
 - Decklid spoiler (LHD)
 - Pony projection lamps
 - Unique high-gloss Black-painted grille (RHD)
- European GT Performance Package:** includes larger radiator, larger brake rotors with 4-piston front calipers, dark aluminum instrument panel trim, spoiler delete, and limited-slip rear differential (RHD)

OPTIONS
INCLUDES GT OPTIONS, PLUS:

- Active Valve Performance Exhaust System (LHD)
- Black-painted roof (RHD)¹
- Heated and cooled front seats (RHD)¹
- MagneRide® Damping System (RHD)¹
- Performance rear wing spoiler¹
- RECARO® sport leather-trimmed front seats¹



18" x 8"
Machined-Face Aluminum with High-Gloss Ebony Black-Painted Pockets [Standard LHD]



19" x 8.5"
Polished Aluminum¹ [Optional LHD]



19" x 9" FRONT and 19" x 9.5" REAR
Ebony Black-Painted Aluminum [Standard RHD]



20" x 9"
Premium Painted Aluminum¹ [Optional LHD]



Available equipment shown. 1. Restrictions apply. See your dealer for details.

Brembo is a trademark of Brembo S.p.A. SiriusXM and all related marks and logos are trademarks of Sirius XM Radio Inc. TORSEN is a registered trademark of JTEKT Corporation.

2021 FORD MUSTANG® | ECOBOOST® | ECOBOOST PREMIUM | GT | GT PREMIUM | SHELBY® GT500®

caribe.ford.com | centroamerica.ford.com



GT + GT PREMIUM PACKAGES¹

BLACK ACCENT PACKAGE (LHD)

GT / GT PREMIUM

- 19" x 8.5" Ebony Black-painted aluminum wheels
- Black-painted roof, badging and decklid spoiler



CARBON SPORT INTERIOR PACKAGE (LHD)

GT PREMIUM

- Alcantara® seat and door-trim panel inserts
- Carbon fiber instrument panel trim and shift knob



FORD SAFE AND SMART™ PACKAGE (LHD)/ CADS GEN3 PACK (RHD)

GT PREMIUM

GT Performance Package, plus:

- Adaptive Cruise Control & Forward Collision Warning with Brake Support
- Pre-Collision Assist with Pedestrian Detection and Automatic Emergency Braking (AEB)
- Auto High-Beam Headlamps
- Lane-Keeping System
- Rain-Sensing Windshield Wipers

PREMIUM PLUS PACKAGE (LHD)

(Equipment Group 201A)

GT PREMIUM

- 12" configurable LCD digital instrument cluster with MyColor®
- Heated steering wheel
- Voice-Activated Touchscreen Navigation System²
- Premier Trim with Color Accent Group: color-accented leather-trimmed front seats, instrument panel trim and unique door-trim inserts; Linked Graphite aluminum instrument panel trim; wrapped center console and knee bolsters with color accent stitching; shift boot with accent stitching; and stitched center console lid



GT PERFORMANCE PACKAGE (LHD)

GT / GT PREMIUM

- 19" x 9" front and 19" x 9.5" rear Ebony Black-painted aluminum wheels with 255/40R19 front and 275/40R19 summer-only tires³
- 19" x 9" front and 19" x 9.5" rear Luster Nickel-painted forged aluminum wheels [optional]
- Unique front air splitter
- Silver-painted strut-tower brace
- Larger radiator
- Upsized rear sway bar
- Heavy-duty front springs
- Unique chassis tuning
- Brembo™ 6-piston front calipers
- Performance rear wing spoiler (fastback only)
- Unique electric power-assisted steering (EPAS), ABS and electronic stability control tuning
- Gauge Pack (oil pressure and vacuum)
- 3.73 (manual)/3.55 (automatic) TORSEN® limited-slip rear differentials



CALIFORNIA SPECIAL PACKAGE (LHD)

GT PREMIUM

- 19" x 8.5" machined-face aluminum wheels with high-gloss Ebony Black-painted pockets
- Unique grille with tri-bar Pony badge
- GT Performance Package front air splitter
- Pedestal-style decklid spoiler
- Mid-body side stripes
- Side scoops
- Carbon Hex aluminum instrument panel trim
- Miko® door-trim panel inserts with red stitching
- Ebony leather-trimmed seats with Miko inserts and red stitching



¹ Restrictions may apply. See your dealer for details. ² Availability varies by market. ³ Ford does not recommend using summer tires when temperatures drop to approximately 45°F or below (depending on tire wear and environmental conditions), or in snow/ice conditions. If the vehicle must be driven in these conditions, Ford recommends using all-season or snow tires.

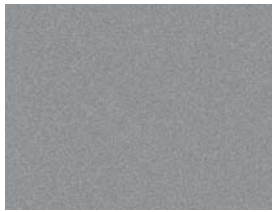
Miko is a registered trademark of Miko s.r.l.

ECOBOOST + PREMIUM / GT + PREMIUM

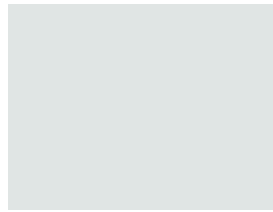
EXTERIOR



SHADOW BLACK
1



ICONIC SILVER METALLIC
2



OXFORD WHITE
3



VELOCITY BLUE METALLIC
4



ANTIMATTER™ BLUE METALLIC
5



RACE RED
6



CARBONIZED GRAY METALLIC
7



RAPID RED METALLIC
TINTED CLEARCOAT¹
8



GRABBER YELLOW
9



TWISTER ORANGE
METALLIC TRI-COAT¹
10

STRIPES



Wheel & Stripe Package:

Silver Stripes	1, 3-9
Ebony Stripes	2-10



California Special Package:

Silver Stripes	1
Ebony Stripes	2-4, 6



Pony Package:

White Stripes	1, 4-10
Ebony Stripes	2-10

Over-The-Top Racing Stripes:



White Stripes 1, 2, 4-10



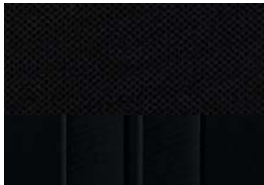
Ebony Stripes 2-10

ECOBOOST / GT

Dark Ceramic Cloth
1-10



Ebony Cloth
1-10

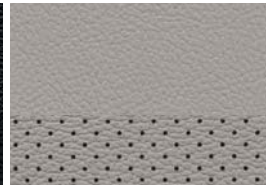


ECOBOOST PREMIUM / GT PREMIUM

Ebony²
1-10



Ceramic²
1-10



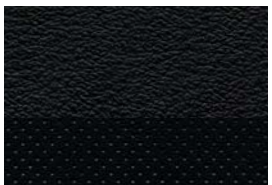
Tan²
1-5, 7, 8



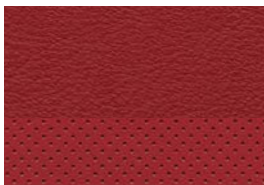
INTERIOR

ECOBOOST PREMIUM PLUS PACKAGE / GT PREMIUM PLUS PACKAGE

Ebony Leather
1-10



Showstopper Red Leather
1-8

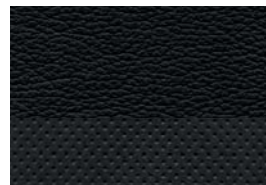


Ebony Leather/Midnight Blue Inserts
1-7



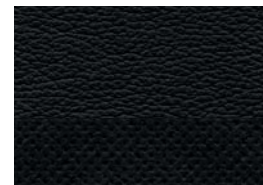
CARBON SPORT
INTERIOR PACKAGE

Ebony Leather/Alcantara® Inserts
1-10



CALIFORNIA SPECIAL
PACKAGE

Ebony Leather/Miko® Inserts
1-4, 6



Colors are representative only. See your dealer for actual paint/trim options. 1. Additional charge. 2. ActiveX™ Seating Material on EcoBoost Premium. Leather on GT Premium.



SHELBY GT500

IGNITE YOUR SOUL.

There's a lot of fire in the belly of this beast. Introducing the most powerful street-legal Ford Mustang. Ever. 760 horses!¹ 625 lb.-ft.¹ of torque. The 2021 Shelby GT500 is capable of accelerating from 0-100 mph and back to 0 in 10.6 seconds.² Aerodynamically advanced, track-ready and spitting venom, Mustang Shelby GT500 is engineered to dominate whatever crosses its path. Look for it way out in front.



LARGEST
COBRA SNAKE
BADGE EVER

OVER
6 SQ. FT. OF
FUNCTIONAL
HOOD VENT

2.5L EATON
SUPERCHARGER

FUNCTIONAL
SELF-CENTERING
HOOD PINS

Shelby GT500. Rapid Red Metallic Tinted Clearcoat.³ Available equipment shown. 1. Horsepower and torque ratings based on premium fuel per SAE J1349[®] standard. Your results may vary. Horsepower and torque are independent attributes and may not be achieved simultaneously. 2. Based on manufacturer testing using Track Mode and using premium fuel per SAE J1349 standard. Your results may vary. 3. Additional charge.

2021 FORD MUSTANG[®] | ECOBOOST[®] | ECOBOOST PREMIUM | GT | GT PREMIUM | SHELBY[®] GT500[®]

caribe.ford.com | centroamerica.ford.com





SHELBY GT500

5.2L SUPERCHARGED CROSS-PLANE CRANK V8
7-SPEED TREMEC® DUAL-CLUTCH
AUTOMATIC TRANSMISSION

**SHELBY GT500 INCLUDES SELECT STANDARD
FEATURES, PLUS:**

- Larger front radiator block off plate
- Magnesium tower-to-tower brace
- 6-way power-adjustable front sport seats in Ebony leather trim with Miko® inserts
- Heated and cooled front seats
- Leather- and Alcantara® wrapped flat-bottom steering wheel with paddle shifters
- Remote start¹
- Rotary gear shift
- Shelby exclusive instrument panel trim
- Shelby Exclusive Trim Package
- Unique front fascia, fenders, grille and front splitter
- Unique hood with hood pins
- Unique rear valance

OPTIONS

- 4-way manually adjustable driver and 2-way manually adjustable front-passenger RECARO® sport seats in Ebony leather trim
- Exposed carbon fiber instrument panel trim
- Painted Black roof²
- Painted over-the-top racing stripes²
- Vinyl over-the-top racing stripes²
- Vinyl side stripes²



19" x 10.5" front
19" x 11" rear
Ebony Black-Painted Aluminum
[Standard]

Shelby GT500. Velocity Blue Metallic. Available equipment shown. **1.** Availability varies by market. **2.** Restrictions may apply. See your dealer for details. TREMEC is a registered trademark of Transmisiones Y Equipos Mecanicos, S.A. de C.V.

2021 FORD MUSTANG® | ECOBOOST® | ECOBOOST PREMIUM | GT | GT PREMIUM | SHELBY® GT500®

caribe.ford.com | centroamerica.ford.com

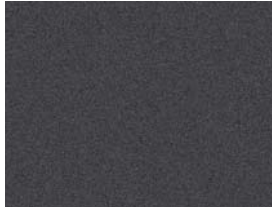


SHELBY GT500 EXTERIOR/STRIPES¹

EXTERIOR



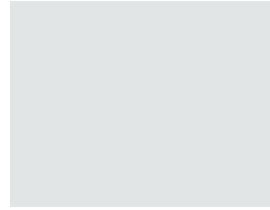
SHADOW BLACK



CARBONIZED GRAY METALLIC



ICONIC SILVER METALLIC



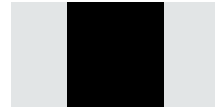
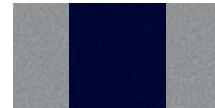
OXFORD WHITE



VELOCITY BLUE METALLIC



FORD PERFORMANCE BLUE METALLIC



ANTIMATTER™ BLUE METALLIC



RACE RED



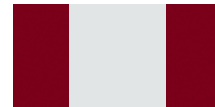
RAPID RED METALLIC
TINTED CLEARCOAT²



GRABBER YELLOW



TWISTER ORANGE
METALLIC TRI-COAT²



Shelby GT500 over-the-top racing stripes available in vinyl or painted. Optional vinyl side stripes offered in same color scheme as vinyl over-the-top racing stripes. Vinyl side stripes are not available with painted over-the-top racing stripes.

Colors are representative only. See your dealer for actual paint/trim options. **1.** Available feature. **2.** Additional charge.



MUSTANG UNBRIDLED.



FORD ACCESSORIES



PERSONALIZE IT.

For some people, aluminum wheels and splash guards are enough to set their vehicle apart. But others want to make their Mustang truly their own. Ford Accessories allow you to personalize your Mustang to your exact needs, interests, hobbies and more. And each accessory is designed specifically for your Mustang, so you can be assured of a perfect fit. See your dealer for a complete list of available Ford Accessories.

accessories.ford.com

Ford Genuine Parts & Service. Keep your vehicle in optimum operating condition with scheduled maintenance service. Ford and Lincoln Dealership technicians know your vehicle inside and out. They are continuously trained by Ford Motor Company and the parts they use are specifically designed for your vehicle. □ See your dealer for limited warranty information on Ford Original Accessories. Ford Licensed Accessories (FLA) are warranted by the accessory manufacturer's warranty. FLA are designed and developed by the accessory manufacturer and have not been designed or tested to Ford Motor Company engineering requirements. Contact your Ford Dealer for details and/or a copy of all limited warranties.

Ford and Oval Device, 911 Assist, ActiveX, AdvanceTrac, Antimatter, AppLink, Belt-Minder, BLIS, EcoBoost, Ford Co-Pilot360, Ford Safe and Smart, Mustang, MyColor, MyKey, Personal Safety System, SecuriLock, SelectShift, SOS Post-Crash Alert System, SYNC, TrackApps and related marks are trademarks of Ford Motor Company.

Comparisons based on competitive models excluding other Ford vehicles (class is High-Power Sports Cars), publicly available information and Ford certification data at time of release. Vehicles may be shown with optional equipment which may or may not be available in your market. Features may be offered only in combination with other options or subject to additional ordering requirements/limitations. Dimensions shown may vary due to optional features and/or production variability. Information is provided on an "as is" basis and could include technical, typographical or other errors. Ford makes no warranties, representations, or guarantees of any kind, express or implied, including but not limited to, accuracy, currency, or completeness, the operation of the information, materials, content, availability, and products. Ford reserves the right to change product specifications, pricing and equipment at any time without incurring obligations. Your Ford or Lincoln Dealer is the best source of the most up-to-date information on Ford and Lincoln vehicles.

©2021 Ford Motor Company

2021 FORD MUSTANG® | ECOBOOST® | ECOBOOST PREMIUM | GT | GT PREMIUM | SHELBY® GT500®

caribe.ford.com | centroamerica.ford.com

