



2022 FORD  
**ECOSPORT**<sup>®</sup>



# FLEXIBILITY COMES STANDARD.

Beach day. Vacation day. Or just Saturday. Whatever the adventure, Ford EcoSport is ready for action. Pack in the essentials with plenty of places to stow, stash and store. Stay connected with high-tech, in-car technology. And dial up the fun with sporty style, impressive performance and well-crafted comfort. EcoSport is the compact SUV that adapts to your big plans.



**Trend.** Luxe Yellow. Available equipment.  
Vehicle imagery throughout this brochure may be computer-generated and may include available and aftermarket equipment.



## AVAILABLE ENGINES

### 1.0L ECOBOOST® & FRONT-WHEEL DRIVE

What does EcoBoost® mean to you? It means award-winning engines (like this one). It means vigorously tested reliability. A 6-speed SelectShift® automatic transmission that also allows you to shift gears for a more engaging drive. And most of all, it means this turbocharged beauty gets you wherever you need to go – with the confidence you can count on.

123 MAX. HORSEPOWER / 125 LB.-FT. MAX. TORQUE<sup>1</sup>

### 1.5L TI-VCT & FRONT-WHEEL DRIVE

Looking for flexibility? You found it. Choose either the 5-speed manual transmission<sup>2</sup> or 6-speed SelectShift automatic transmission, and hit the road knowing that you'll have what you need to get you where you're going.

123 MAX. HORSEPOWER / 111 LB.-FT. MAX. TORQUE<sup>1</sup>

### 2.0L TI-VCT & FRONT-WHEEL DRIVE

Feeling a little power hungry? Satisfy that urge with this available 2.0L direct-injection engine. Hug corners and hit straightaways with added horsepower and torque. Be confident in just about any weather condition. And bring more joy to every ride.

166 MAX. HORSEPOWER / 149 LB.-FT. MAX. TORQUE<sup>1</sup>



**Titanium.** Blue Metallic. Available equipment.

<sup>1</sup> Horsepower and torque ratings based on premium fuel per SAE J1349® standard. Your results may vary. Horsepower and torque are independent attributes and may not be achieved simultaneously. <sup>2</sup> Availability varies by market.

# CONFIDENCE IS BUILT IN.

Whether you're heading up into the hills or running around town, Ford EcoSport instills assurance through changing weather and road conditions. The Anti-Lock Brake System (ABS) helps prevent wheel lockup during hard braking to help avoid skidding and loss of control on wet, slippery roads, while Electronic Stability Control (ESC) with Active Rollover Protection (ARP),<sup>1</sup> standard on every EcoSport, provides enhanced control by selectively applying individual brakes and modifying engine power to help keep all 4 wheels firmly planted. And the standard electric power-assisted steering (EPAS) helps correct irregularities and smooth out vibrations to help you maneuver around twisting roads and city streets with ease and confidence.



**Titanium.** Blue Metallic. Available equipment. **1.** Remember that even advanced technology cannot overcome the laws of physics. It's always possible to lose control of a vehicle due to inappropriate driver input for the conditions.





Titanium. Blue Metallic. Available equipment.

# ASSISTANCE IS AT HAND.

From the driveway to the highway, our collection of Ford driver-assist features<sup>1</sup> is designed to help you feel confidently in command at the wheel of your Ford EcoSport.



## STANDARD

- Hill Start Assist (6-Speed Automatic Transmission)

## AVAILABLE

- Front and Rear Parking Sensors
- Rear View Camera
- Rain-Sensing Windshield Wipers
- Automatic Headlamps

<sup>1</sup> Driver-assist features are supplemental and do not replace the driver's attention, judgment and need to control the vehicle. It does not replace safe driving. See owner's manual for details and limitations.





# FUN & COMFORT

GO TOGETHER HERE.

With the available 8" LCD touchscreen, you can control entertainment, navigation and so much more with your fingertips. You can also pair your compatible Apple iPhone® or Android™ phone with available SYNC® 3<sup>1</sup> and play your favorite music by artist, song title or playlist.<sup>2</sup> In Ford EcoSport, fun is always within reach.



**Titanium.** Ebony leather-trimmed interior. Available equipment.

**1.** Don't drive while distracted or while using handheld devices. Use voice-operated systems when possible. Some features may be locked out while the vehicle is in gear. Not all features are compatible with all phones. Functionality varies by market. **2.** Requires phone with active data service and compatible software. SYNC 3 does not control 3rd-party products while in use. 3rd parties are solely responsible for their respective functionality. Android is a trademark of Google LLC. iPhone is a trademark of Apple Inc., registered in the U.S. and other countries.

AVAILABLE FEATURES  
8" LCD TOUCHSCREEN  
AUTO-DIMMING REARVIEW MIRROR  
KEYLESS ENTRY  
WITH PUSH-BUTTON START



# CONNECT IN ALL THE RIGHT WAYS.

EcoSport. Make calls. Send and receive audible text messages. And so much more. Just swipe left or right, or use simple voice commands to help ensure that your life doesn't miss a beat.

The available voice-activated SYNC® 3 system<sup>1</sup> puts just what you need at the tip of your tongue, while SYNC AppLink<sup>®2</sup> gives you voice control of compatible mobile apps – including Apple CarPlay<sup>®3</sup> and Android Auto<sup>™3</sup> – so you can see your phone's familiar interface on the big screen.



The available Voice-Activated Touchscreen Navigation System<sup>4</sup> delivers turn-by-turn directions and vivid 3-D maps on the SYNC 3 touchscreen, while pinch-to-zoom capability allows for a closer look.

**1.** Don't drive while distracted. Use voice-operated systems when possible; don't use handheld devices while driving. Some features may be locked out while the vehicle is in gear. Not all features are compatible with all phones. Functionality varies by market. **2.** Commands may vary by phone and AppLink software. **3.** Requires phone with active data service and compatible software. SYNC does not control 3rd-party products while in use. 3rd parties are solely responsible for their respective functionality. **4.** Availability varies by market.

Android Auto is a trademark of Google LLC. Apple CarPlay is a trademark of Apple Inc., registered in the U.S. and other countries.





## YOUR NEW FAVORITE **HANGOUT.**

Getting there is easy. Leaving the cabin is the hard part. Ford EcoSport makes the journey as exciting as the destination with a level of sophistication that usually comes with sticker shock. With room for up to 5, an available 4-way manually adjustable driver's seat, and a 3-person rear seat with an available fold-down center armrest and 2 beverage holders, every seat is a good one. And, with dozens of storage solutions – including a center console and door pockets – EcoSport makes stowing essentials like your phone, charger and snacks a breeze.



**Titanium.** Ebony leather-trimmed interior. Available equipment.



DESIGNED TO PURSUE YOUR  
**PASSIONS.**

Gardening? Redecorating? Heading out on a weekend adventure? Whatever your plans, Ford EcoSport is designed to help make them happen. Just reach under the taillamp and press the soft button to swing open the wide rear door, then start loading or unloading. Need to accommodate longer items? No problem, thanks to the split-fold-flat rear seats that let you make the most of your day while out and about. That's practical thinking, so you can get started doing what you love.



**Trend.** Luxe Yellow. Available equipment. Cargo and load capacity limited by weight and weight distribution.





Fold it. Stow it. Move it. An active life demands a vehicle that can keep up. Ford EcoSport has the versatility you need to do it all. Should the need arise, simply fold one or both sides of the 60/40 split-fold-flat rear seats to open up more storage space. Use any of the more than 25 storage pockets, bins and hooks to help keep your things in place. Stay charged up with available USB charging ports. And travel well with a cooled glove box that conveniently stores items to keep you refreshed on all your adventures. When it comes to getting out there and going, EcoSport is ready when you are.

U.S. model shown.  
Cargo and load capacity limited by weight and weight distribution.



# PROTECTION SURROUNDS YOU.

You've heard the saying: There's safety in numbers. That's why driver and front-passenger single-stage front airbags<sup>1</sup> are included. Plus, front-seat side airbags<sup>1</sup> and front and rear side-curtain airbags<sup>1</sup> are available to help keep you protected on all sides. When it comes to your family's well-being, Ford EcoSport takes things seriously.



1. Always wear your safety belt and secure children in the rear seat.



# AMBIENTE

Ford EcoSport Ambiente is the economy-minded subcompact with the adventurous attributes of a sporty crossover. Smartly put together with features like steering wheel-mounted audio controls, Bluetooth® connection, Anti-Lock Brake System (ABS), Electronic Stability Control (ESC), and versatile 60/40 split fold-flat rear seats that give you the freedom you need to get out and explore. A 1.5L Ti-VCT engine gives you all the performance you desire without hurting your wallet. In EcoSport Ambiente, you're geared up to go.



**Ambiente.** Diamond White. Available equipment. The Bluetooth word mark is a trademark of the Bluetooth SIG, Inc.



1.5L Ti-VCT  
5-SPEED MANUAL TRANSMISSION  
AVAILABILITY VARIES BY MARKET

1.5L Ti-VCT  
6-SPEED SELECTSHIFT® AUTOMATIC TRANSMISSION  
AVAILABILITY VARIES BY MARKET

# AMBIENTE

LHD ONLY

## AMBIENTE STANDARD FEATURES:

### MECHANICAL

Anti-Lock Brake System (ABS) and Electronic Stability Control (ESC) with Active Rollover Protection (ARP) (manual transmission)

Anti-Lock Brake System (ABS) and Electronic Stability Control (ESC) with Active Rollover Protection (ARP) and Hill Start Assist (automatic transmission)

Battery saver

Electric power-assisted steering (EPAS)

Front stabilizer bar

Front-wheel drive (FWD)

Power front disc/rear drum brakes

### APPEARANCE

Black door handles

Black, power sideview mirrors with integrated turn signal indicators

High-gloss black grille bars and surround

Laminated windshield

Rear-window defroster

Security approach lamps

Single rear fog lamp

Swing gate-mounted spare wheel and tire with cover

Tinted glass

### COMFORT & CONVENIENCE

2-way manually adjustable driver and front-passenger seats with manual recline

60/40 split-fold-flat rear seats

Air conditioning

Carpeted floor mat for driver

Center console

Cooled glove box

Driver and front-passenger sun visors with vanity mirrors

Front and rear dome lights

Front-passenger seat back map pocket

Front-passenger under-seat storage

Load compartment side shopping hooks

Load compartment tie-downs

Power windows

Reach/rake adjustable steering column

Rear intermittent wiper

Silver Twilight-painted interior accents

Speed control and adjustable speed limiter (LHD)<sup>1</sup>

Theater-dimming lighting

Trip computer

USB charging port

Variable-intermittent windshield wipers

### CONNECTIVITY & ENTERTAINMENT

**ICE Pack 6** includes 4.2" color multifunction display, 6 speakers, SYNC® Voice-Activated, In-Vehicle Communications System with 2 USB ports, and steering wheel-mounted controls

Bluetooth® connection

### SAFETY & SECURITY

2-way-adjustable front and rear outboard head restraints

3-point safety belts

Belt-Minder® front safety belt reminder for driver

Child-safety rear door locks

Engine immobilizer

First-aid kit

ISOFIX hard-point attachments (outboard rear seats only)

Power door and swing gate locks

Remote control locking with 1 flip and 1 plain key

Side-intrusion door beams

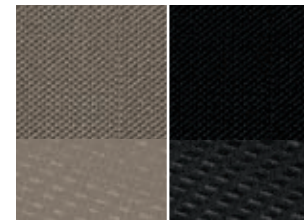
Single-stage driver and front-passenger front airbags<sup>2</sup>



16" SPARKLE SILVER STEEL COVERS  
Standard



### LANAI CLOTH INTERIORS



Medium Stone    Ebony

### EXTERIORS



Blue Metallic    Race Red    Luxe Yellow    Diamond White    Moondust Silver Metallic    Smoke Metallic    Absolute Black

Available equipment shown. Colors are representative only. See your dealer for actual paint/trim options. **1.** Restrictions apply. **2.** Always wear your safety belt and secure children in the rear seat.



# TREND

Start a movement in Trend. Automatic headlamps illuminate when they detect low lighting conditions. The 4-way-adjustable driver's seat lets you find just the right position. The Rear View Camera lets you see what's behind you in the 6.5" touchscreen. And SYNC® 3<sup>1</sup> and the Voice-Activated Touchscreen Navigation System<sup>2</sup> help you stay in the know. Sporty. Upscale. The 2022 Ford EcoSport Trend.



**TREND.** Moondust Silver Metallic. Available equipment. **1.** Don't drive while distracted or while using handheld devices. Use voice-operated systems when possible. Some features may be locked out while the vehicle is in gear. Not all features are compatible with all phones. Functionality varies by market. **2.** Availability varies by market.





1.0L ECOBOOST®  
6-SPEED SELECTSHIFT® AUTOMATIC TRANSMISSION  
AVAILABILITY VARIES BY MARKET

1.5L Ti-VCT  
6-SPEED SELECTSHIFT AUTOMATIC TRANSMISSION  
AVAILABILITY VARIES BY MARKET

2.0L Ti-VCT  
6-SPEED SELECTSHIFT AUTOMATIC TRANSMISSION  
AVAILABILITY VARIES BY MARKET

# TREND



TREND INCLUDES SELECT AMBIENTE FEATURES, PLUS:

### MECHANICAL

- Anti-Lock Brake System (ABS) and Electronic Stability Control (ESC) with Active Rollover Protection (ARP) and Hill Start Assist
- Battery saver
- Electric power-assisted steering (EPAS)
- Front stabilizer bar
- Front-wheel drive (FWD)
- Power front disc/rear drum brakes

### APPEARANCE

- Automatic headlamps
- Black roof-rack side rails
- Body-color door handles
- Body-color sideview mirrors
- Front fog lamps with black bezels
- Silver Lining-painted grille bars and surround

### COMFORT & CONVENIENCE

- 4-way manually adjustable driver's seat
- Ano Gray-painted interior accents
- Auto-dimming rearview mirror<sup>1</sup>
- Courtesy light with 2 front map lights
- Driver and front-passenger seat back map pockets
- Driver's armrest
- Load compartment lighting
- Overhead console with sunglasses holder
- Power windows with driver 1-shot-up/-down feature
- Rain-sensing windshield wipers<sup>1</sup>
- Rear-seat center armrest with cupholders
- Speed control and adjustable speed limiter<sup>2</sup>

### CONNECTIVITY & ENTERTAINMENT

- ICE Pack 10** includes 6.5" LCD touchscreen, 6 speakers, SYNC<sup>®</sup> 3, Voice-Activated Touchscreen Navigation System,<sup>1</sup> steering wheel-mounted controls, and 2 USB ports
- Bluetooth<sup>®</sup> connection

### SAFETY & SECURITY

- 2-row side-curtain airbags<sup>3</sup>
- Belt-Minder<sup>®</sup> front safety belt reminder for driver
- Child-safety rear door locks
- Engine immobilizer
- First-aid kit
- Front-seat side airbags<sup>3</sup>
- Perimeter alarm<sup>2</sup>
- Power door and swing gate locks
- Rear View Camera
- Remote control locking with 1 flip and 1 plain key
- Single-stage driver and front-passenger front airbags<sup>3</sup>

### OPTIONS

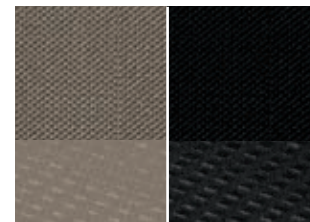
- Belt-Minder front safety belt reminder for front passenger (LHD)<sup>2</sup>
- Volumetric alarm (LHD)



16" SHADOW SILVER ALLOY  
Standard



### DWELL CLOTH INTERIORS



Medium Stone    Ebony

### EXTERIORS



Blue Metallic    Race Red    Luxe Yellow    Diamond White    Moondust Silver Metallic    Smoke Metallic    Absolute Black

Available equipment shown. Colors are representative only. See your dealer for actual paint/trim options. 1. Availability varies by market. 2. Restrictions apply. 3. Always wear your safety belt and secure children in the rear seat.





# TITANIUM

Titanium includes a great array of comfort and convenience features designed to appeal. Inside, the available 8" touchscreen with SYNC® 3<sup>1</sup> and the Voice-Activated Touchscreen Navigation System<sup>2</sup> means you can take the scenic route with confidence. The keyless entry with push-button start lets you lock, unlock and start your EcoSport while keeping keys securely in a pocket or purse. Available leather-trimmed seats up its comfort and sophistication to please those with more refined tastes. Fine-tune your comfort level with the driver's adjustable lumbar support. And electronic automatic temperature control lets you set your preferred temperature. In EcoSport Titanium, you're ready to handle every trip with ease.



**Titanium.** Blue Metallic. Available equipment. **1.** Don't drive while distracted or while using handheld devices. Use voice-operated systems when possible. Some features may be locked out while the vehicle is in gear. Not all features are compatible with all phones. Functionality varies by market. **2.** Availability varies by market.

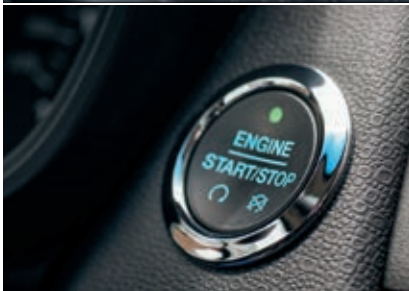


1.0L ECOBOOST®  
6-SPEED SELECTSHIFT® AUTOMATIC TRANSMISSION  
AVAILABILITY VARIES BY MARKET

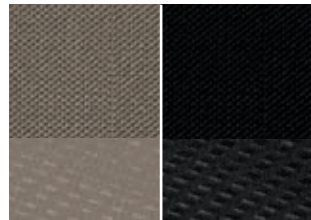
1.5L Ti-VCT  
6-SPEED SELECTSHIFT AUTOMATIC TRANSMISSION  
AVAILABILITY VARIES BY MARKET

2.0L Ti-VCT  
6-SPEED SELECTSHIFT AUTOMATIC TRANSMISSION  
AVAILABILITY VARIES BY MARKET

# TITANIUM

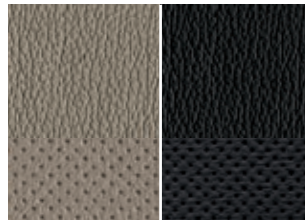


### DWELL CLOTH INTERIORS



Medium Stone    Ebony

### LEATHER INTERIORS<sup>1</sup>



Medium Light Stone    Ebony

### EXTERIORS



Blue Metallic    Race Red    Luxe Yellow    Diamond White    Moondust Silver Metallic    Smoke Metallic    Absolute Black

TITANIUM INCLUDES SELECT TREND FEATURES, PLUS:

#### MECHANICAL

- Anti-Lock Brake System (ABS) and Electronic Stability Control (ESC) with Active Rollover Protection (ARP) and Hill Start Assist
- Battery saver
- Electric power-assisted steering (EPAS)
- Front stabilizer bar
- Front-wheel drive (FWD)
- Power front disc/rear drum brakes

#### APPEARANCE

- Automatic headlamps
- Chrome grille bars and surround
- Front fog lamps with body-color bezels
- Power-folding sideview mirrors with puddle lamps
- Silver roof-rack side rails

#### COMFORT & CONVENIENCE

- 2 front map lights
- 2nd-row powerpoint (LHD)
- 4-way manually adjustable driver's seat
- Auto-dimming rearview mirror<sup>1</sup>
- Black-painted interior accents
- Driver and front-passenger seat back map pockets
- Driver's adjustable lumbar support
- Driver's sliding armrest
- Electronic automatic temperature control (EATC)
- Load compartment lighting
- Overhead console with sunglasses holder
- Power windows with driver 1-shot-up/-down feature
- Rain-sensing windshield wipers<sup>1</sup>
- Rear-seat center armrest with cupholders
- Speed control and adjustable speed limiter (LHD)<sup>2</sup>

#### CONNECTIVITY & ENTERTAINMENT

- ICE Pack 10** includes 6.5" LCD touchscreen, 6 speakers, SYNC<sup>®</sup> 3,<sup>1</sup> Voice-Activated Touchscreen Navigation System,<sup>1</sup> steering wheel-mounted controls, and 2 USB ports (LHD); (requires 2.0L engine)
- ICE Pack 41** includes 8" LCD touchscreen, 7 speakers, SYNC 3,<sup>1</sup> Voice-Activated Touchscreen Navigation System,<sup>1</sup> steering wheel-mounted controls, and 2 USB ports
- Bluetooth<sup>®</sup> connection

#### SAFETY & SECURITY

- 2-row side-curtain airbags<sup>3</sup>
- Belt-Minder<sup>®</sup> front safety belt reminder<sup>2</sup>
- Child-safety rear door locks
- Engine immobilizer
- First-aid kit
- Front parking sensors
- Front-seat side airbags<sup>3</sup>
- Keyless entry with push-button start
- Perimeter alarm
- Power door and swing gate locks
- Rear parking sensors
- Rear View Camera
- Remote control locking Special System - 2 keyless
- Single-stage driver and front-passenger front airbags<sup>3</sup>

#### OPTION

- Leather-trimmed seating



16" SHADOW SILVER ALLOY  
Standard (RHD)



17" SHADOW SILVER ALLOY  
Standard (LHD)

Available equipment shown. Colors are representative only. See your dealer for actual paint/trim options. 1. Availability varies by market. 2. Restrictions apply. 3. Always wear your safety belt and secure children in the rear seat.





# ROOMY

IN A COMPACT WAY.

Interior (mm)	Front / Rear
Head room	1,207 / 953
Leg room	1,090 (max.) / 933
Hip room	1,210 / 1,293
Shoulder room	1,355 / 1,302

Capacities (liters)	
Passenger volume	2,580.9
Room behind rear seats	592
Room behind front seats	1,414.5
Fuel tank	51.5

Exterior (mm)	
Wheelbase	2,519
Length	4,096
Height	1,647
Width - Including mirrors	2,057
Width - Mirrors folded	1,826



Titanium. Race Red. Available equipment.



# PERSONALIZATION MAKES IT YOURS.

## ACCESSORIZE IT.

For some people, aluminum wheels and splash guards are enough to set their vehicle apart. But others want to make their EcoSport truly their own. Available Ford Accessories allow you to personalize your EcoSport to your exact needs, interests, hobbies and more. And each accessory is designed specifically for your EcoSport, so you can be assured of a perfect fit. See your dealer for a complete list of available Ford Accessories.

[accessories.ford.com](https://accessories.ford.com)



**Ford Genuine Parts & Service.** Keep your vehicle in optimum operating condition with scheduled maintenance service. Ford and Lincoln Dealership technicians know your vehicle inside and out. They are continuously trained by Ford Motor Company and the parts they use are specifically designed for your vehicle. □ See your dealer for limited warranty information on Ford Original Accessories. Ford Licensed Accessories (FLA) are warranted by the accessory manufacturer's warranty. FLA are designed and developed by the accessory manufacturer and have not been designed or tested to Ford Motor Company engineering requirements. Contact your Ford Dealer for details and/or a copy of all limited warranties.

Ford and Oval Device, AppLink, Belt-Minder, EcoBoost, EcoSport, SelectShift, SYNC and related marks are trademarks of Ford Motor Company. Vehicles may be shown with optional equipment which may or may not be available in your market. Features may be offered only in combination with other options or subject to additional ordering requirements/limitations. Dimensions shown may vary due to optional features and/or production variability. Information is provided on an "as is" basis and could include technical, typographical or other errors. Ford makes no warranties, representations, or guarantees of any kind, express or implied, including but not limited to, accuracy, currency, or completeness, the operation of the information, materials, content, availability, and products. Ford reserves the right to change product specifications, pricing and equipment at any time without incurring obligations. Your Ford or Lincoln Dealer is the best source of the most up-to-date information on Ford and Lincoln vehicles. Colors are representative only. See your dealer for actual paint/trim options.

©2021 Ford Motor Company

