

FORESTER



SUBARU

Confidence in Motion





THIS IS WHERE **MEMORIES** ARE MADE.

Go to new places. See new sights. Revel in new experiences. This is the essence of adventure—and the inspiration for the redesigned Forester. With capability in its DNA, the Forester is ready to take you farther than ever before. With the safety to be able to protect you and your family, along with passenger-ready versatility, your adventures can be shared with the ones you love.



BORN TO EXPLORE. DESTINED TO TRAVEL.

In nature, you must adapt in order to survive. The Forester is no different. It's evolved, with an ever better driving experience, and also adapted with an improved look and feel inside and out. No matter where you take it, the Forester strives to be the fittest, to conquer its environment with its versatility and striking looks to match.





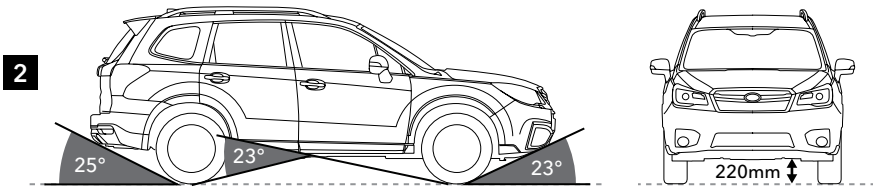
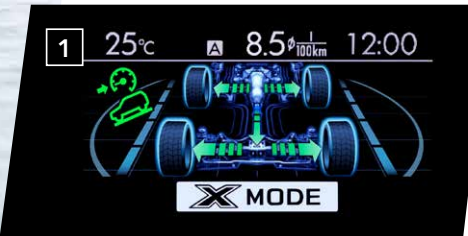
FIND YOUR INNER STRENGTH.

The second wind. It's that extra bit of strength summoned from within that helps you rise to the occasion and conquer the challenge. The Forester finds its inner strength with X-Mode. Activated with the push of a button, it gives the Forester that extra bit of capability you may need to take on adverse road and weather conditions.

1 X-Mode*1 and Hill Descent Control*1 2 Engineering that doesn't quit.

"X" marks added capability for any driver, on most any road. With a push of a button, X-Mode takes control of the engine, transmission, AWD, brakes, and other components to safely navigate through bad roads and slippery surfaces for maximum confidence. For challenging descents, Hill Descent Control enhances confidence down the steepest of hills you'll encounter by providing constant, controlled momentum so the driver can focus more on steering the vehicle—and less on braking.

The Forester was engineered to help you conquer ledges, rocks, trees and other obstacles you may encounter without sustaining damage or getting stuck. The larger the object, the larger the approach and departure angles needed to prevent damage to the front and rear bumpers. Optimised for both, the Forester's ground clearance maximises break-over angles, minimising your chances of being hung up from underneath.



Departure Angle Break-over Angle*2 Approach Angle Minimum Road Clearance

*1 Standard on 2.0i PREMIUM and 2.0XT.
*2 Angle is 22 degrees for 2.0XT.



FEEL RIGHT AT HOME ON THE ROAD.

Designed with an active lifestyle in mind, the redesigned interior of the Forester is a great place to start your adventure. Every useful feature of the Forester is thoughtfully placed to be right where you need it, when you need it. With high-quality materials and durable design, it's designed to make tasks simpler, and driving more comfortable.

EXPLORE YOUR WORLD.

Going on the road doesn't mean you'll have to leave in all behind. Stay grounded, yet undistracted with technology that's intuitive and easy to use. The Forester keeps you connected and on course with audio systems that you can either control with the touch of your fingertips or the sound of your voice. And with smartphone and iPhone*1 connectivity, you're never free of your peers or playlists*2.

1 Instrument Cluster

The instrument panel of the Forester is designed to deliver information quickly and effortlessly. The tachometer and speedometer are clearly visible to help keep more focus on the road ahead.

3 Touchscreen Control

Use the touchscreen to easily manage your music, just as you would on your smartphone. Simply connect your smartphone through Bluetooth®*4 or the USB port, and you can choose your music right on the touchscreen.

5 Voice Recognition*6 and Siri Eyes Free*1*5*7

Your Forester has more hands-free options than ever before, thanks to intuitive Voice Recognition*6 and Siri Eyes Free*1*3*7 integration. Use Siri to link your compatible Apple*1 product to your Forester, allowing you to make hands-free calls, play music, check emails and search the web.

2 High-grade Multifunction Display*3

Located conveniently in the instrument panel, informative car vitals are displayed at a touch of a button. It also features advanced environmental performance and efficiency—even allowing you to compare the efficiency between different trips.

4 Premium Audio System with Harman/Kardon Speakers*5

The 8-speaker, 440W system was designed for ultimate sound performance. Two oval-shaped speakers are placed in the front doors and two speakers are installed at the rear doors.

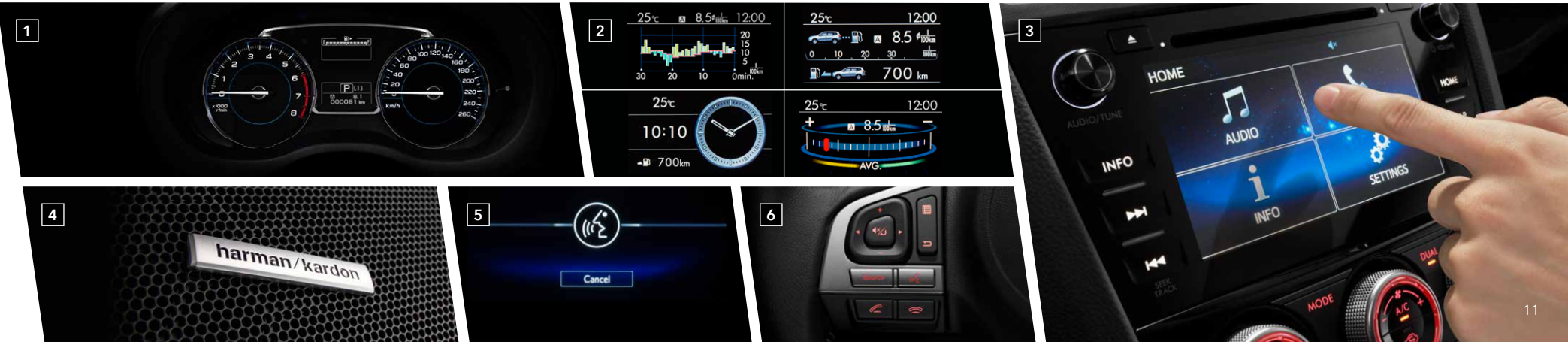
6 Steering Wheel-mounted Controls

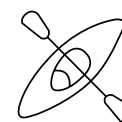
Steering wheel-mounted controls place audio controls conveniently at your fingertips, and an available Bluetooth®*4 hands-free system automatically links with your smartphone to help keep you focused on the road.



*1 Apple, iPod, Siri and iTunes are registered trademarks of Apple Inc. App Store is a service mark of Apple Inc.
*2 Driver is always responsible for safe and attentive driving. Please refrain from operating the touchscreen while driving. Package communications fee may be charged depending on your area.
*3 Standard on 2.0i PREMIUM and 2.0XT.

*4 Bluetooth is a registered trademark of Bluetooth SIG, Inc. America.
*5 Optional on 2.0XT.
*6 Voice Recognition is compatible with select languages only and cannot accept all languages.
*7 Siri-compatible Apple product (iPhone, iPad, iPod touch, etc.) required.





SUPPORTIVE OF EVERYTHING YOU LOVE DOING.

The Forester is well prepared to keep up with your life, from planned vacations to spontaneous hiking expeditions. The wide cargo area can accommodate four large suitcases and even the bulkiest adventure gear, whilst a power rear gate, wider door openings and lower side sills help you load and unload with ease. For longer items, the rear seats fold flat in a 60/40 split.



SUBARU CORE TECHNOLOGY

SUBARU BOXER ENGINE

Few other SUVs drive with the level of confidence and responsiveness of the Forester, and the main reason for this lies beneath the surface—the SUBARU BOXER engine. Its horizontally opposed configuration places the pistons 180 degrees apart, for a lower, flatter profile than other engine types. This gives the engine, and therefore the overall vehicle, a lower centre of gravity and better sense of balance. Further, the pistons' opposing movements inherently counteract each other, naturally helping to reduce vibration.



2.0-LITRE DOHC TURBO SUBARU BOXER

MAX OUTPUT:

177 kW (241 PS) / 5,600 rpm

MAX TORQUE:

350 Nm (35.7 kgfm) / 2,400-3,600 rpm

FUEL CONSUMPTION:

8.5 lit./100 km*

CO₂ EMISSIONS:

197 g/km*

2.0-LITRE DOHC SUBARU BOXER

MAX OUTPUT:

110 kW (150 PS) / 6,200 rpm

MAX TORQUE:

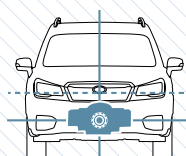
198 Nm (20.2 kgfm) / 4,200 rpm

FUEL CONSUMPTION:

8.2 lit./100 km*

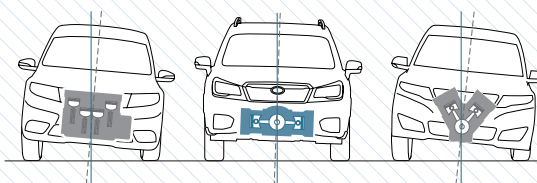
CO₂ EMISSIONS:

189 g/km*



Increased Stability

Because the engine block has a flatter profile and sits lower in the chassis, the overall vehicle is more stably balanced and resistant to side-to-side motion than other designs.



Long-lasting Performance

The engine's flat design is inherently rigid and self-balancing to achieve durability and reliable performance, generating less vibration than V-type or in-line engines in the same class.

* Fuel consumption and CO₂ emissions:
According to ECE R101-01.



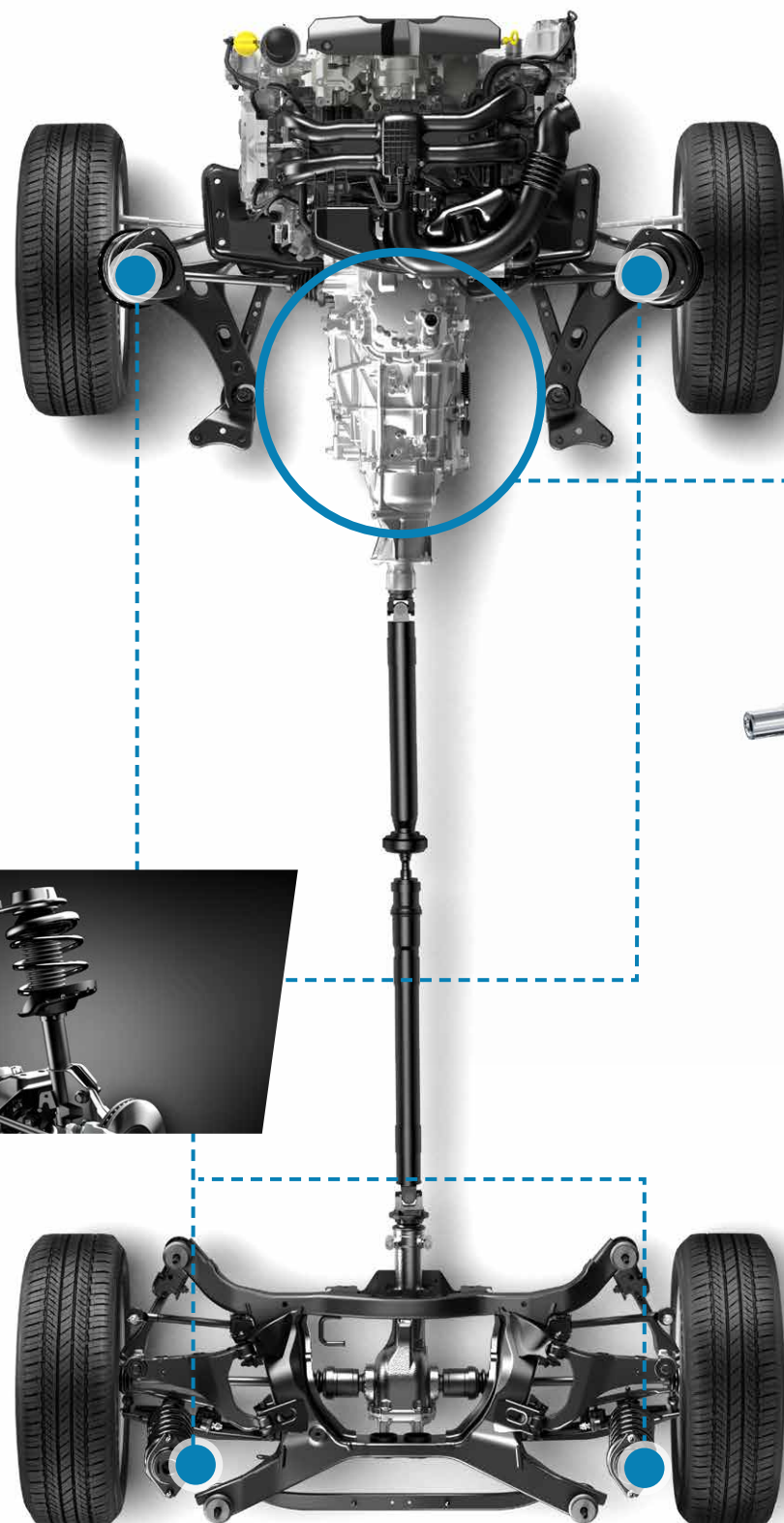
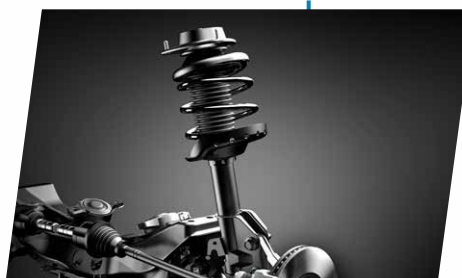
SUBARU CORE TECHNOLOGY

SYMMETRICAL ALL-WHEEL DRIVE

Control leads to confidence, and stability creates an agility that excites in the Forester. Subaru vehicles are gifted at inspiring confidence behind the wheel, thanks to the inherently stable design of Symmetrical AWD paired with the uniquely balanced SUBARU BOXER engine. This system delivers power to all four wheels at all times for enhanced control on all roads and in poor conditions. It has excellent side-to-side balance and handling precision, thanks to its main components being aligned longitudinally, whilst its low centre of gravity creates an especially engaging and responsive drive. The unique advantages of Symmetrical AWD make for exceptionally rewarding handling and empower you to better avoid danger.

SUSPENSION

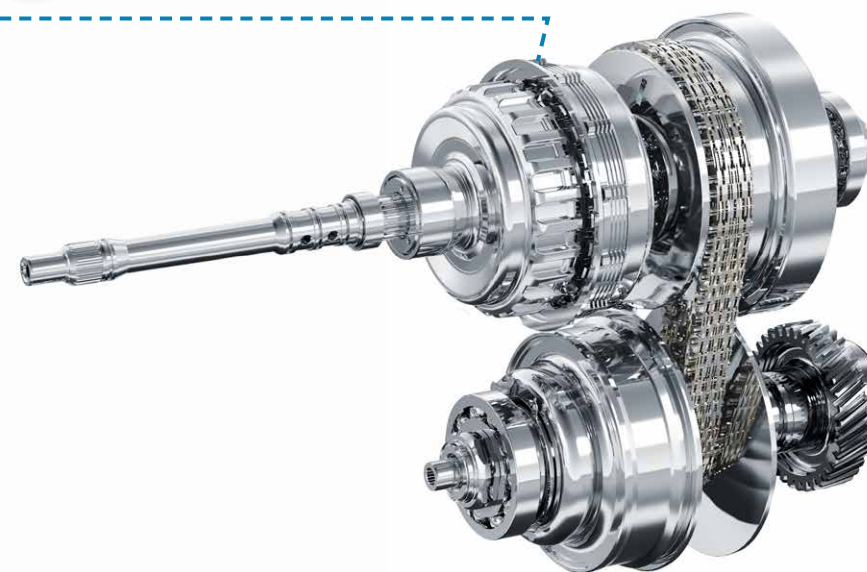
For responsive handling and capability over a variety of surfaces and conditions, the Forester is equipped with an advanced front and rear suspension. With spring rates and dampening dialed in for smooth surfaces as well as rough, the Forester is a true multi-purpose vehicle. For DIT models, the front suspension features friction-control oil seals, guide bushings, hydraulic fluid on the struts, and optimised suspension tuning—all working together to help smooth vibrations and decrease body roll. Also for the DIT model, the rear support sub-frame provides a more rigid base to mount the rear suspension, for a more controlled ride and more responsive steering.



SUBARU CORE TECHNOLOGY

LINEARTRONIC + ACTIVE TORQUE SPLIT AWD

For instant, seamless response to changing conditions, the Lineartronic CVT (Continuously Variable Transmission) uses a chain instead of a belt—allowing a greater span of overall ratios for improved performance and efficiency as well as a faster response to throttle input. It's longitudinally paired with an active torque-split AWD system that responds to traction conditions, the transmission and driver inputs by continuously controlling the torque distribution front to rear.



SI-DRIVE*1

Subaru Intelligent Drive (SI-DRIVE) can adjust the responsiveness of its drivetrain to support your driving style, road conditions or any driving state at your immediate request. Quickly re-map the throttle response and automatic-transmission shifting behaviour to ensure that you always have the best performance for any circumstance.

*1 Standard on 2.0i PREMIUM and 2.0 XT.
*2 3-mode SI-DRIVE (Sport Sharp mode, Sport Mode and Intelligent mode) is available only on 2.0XT. Other models are available with 2-mode SI-DRIVE (Sport mode and Intelligent mode).

S# Sport Sharp Mode*2

With the focus on response, Sport Sharp mode drives the engine to its maximum potential. In this mode, the engine responds directly to the accelerator for a more powerful delivery when accelerating. Use the paddle shifters in Sport Sharp mode to take more control of engine performance with eight gear ratios—like an 8-speed transmission—for truly spirited driving.



[S] Sport Mode

Sport mode delivers smooth engine performance at any driving speed. You'll immediately feel a linear response that brings to life the refined, torque-rich response.



[I] Intelligent Mode

SI-DRIVE activates Intelligent mode for immediate driving response and environmental responsibility. Throttle mapping balances smoothness and efficiency for an enhanced level of control.



OUR VISION. **YOUR SAFETY.**

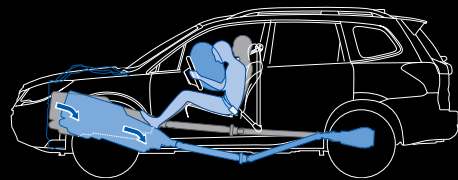
To help you avoid accidents and protect you when they can't be avoided, the Forester is equipped with active and passive safety features. Subaru Active Safety helps you circumvent trouble with predictable handling, precise control, excellent visibility, and advanced technologies that help you avoid incidents before they happen. Passive Safety features include systematically placed airbags, whiplash-reducing front seats, retracting pedals and 3-point seatbelts—all there to help protect you if the unthinkable occurs.



PASSIVE SAFETY

Cabin-protecting layout

Every Subaru goes above and beyond common practice when it comes to your safety. In the event of a head-on collision, your Forester's SUBARU BOXER engine and gearbox are designed to avoid rushing into the cabin for your protection.



Pedestrian Protection

Shock-absorbing space within the vehicle helps reduce pedestrian injury, as do an energy-absorbing front bumper and a specially designed area around the windshield wipers. And in order to provide protection in the head zone, a split-type construction in the front has been implemented.

Seats, Seatbelts and SRS* Airbags

Standard on the Forester are front SRS* airbags, plus front-side, curtain SRS* airbags and knee SRS* airbags. Height-adjustable front seatbelts feature pretensioners to hold passengers firmly in place as well as load limiters that ease peak forces to the chest. In a rear collision, front seats utilise rigid frames, firm headrests and such details as energy-absorbing mounting of the inner seat springs—all to help reduce the chance of whiplash.

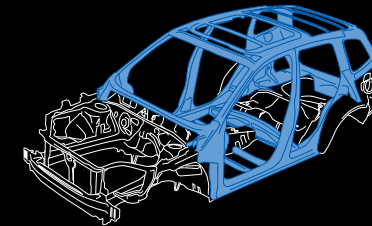
5-Star Euro NCAP Rating

The Subaru Forester has been awarded the maximum five-star safety rating in the latest round of Euro NCAP (European New Car Assessment Programme) safety performance tests.



Ring-shaped Reinforcement Frame

The Ring-shaped Reinforcement Frame strengthens the passenger cabin's roof, doors, pillars and floor. This design helps divert and dissipate impact energy away from the occupants in a collision by use of high-strength materials and strategic placements. Whilst making it stronger with increased torsional rigidity, the overall frame is still lightweight.

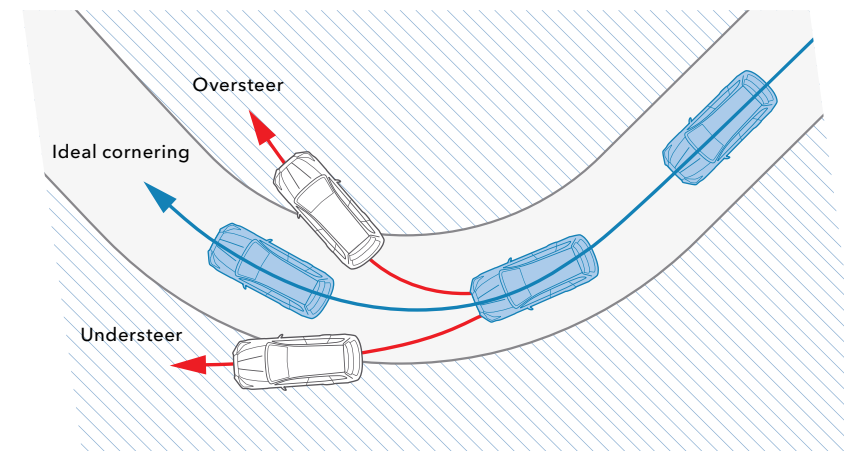


Vehicle Dynamics Control System

Vehicle Dynamics Control System monitors and analyses if the vehicle is following the driver's intended course via an array of sensors. If a tyre slips or a high speed turn causes the vehicle off its intended path, the AWD torque distribution, engine output and brakes at each wheel are adjusted to assist in keeping the vehicle on course.

Braking System

The standard 4-wheel disc braking system is enhanced by Antilock Braking System (ABS) with Electronic Brake-force Distribution, to help redistribute braking power where you need it among all four wheels, as well as Brake Assist and Brake Override for control in emergency braking situations. There's also Auto Vehicle Hold, which helps prevent rollback when starting from a stop on any slope. The DIT model adds larger 17-inch ventilated discs in front and 16-inch ventilated discs for the rear, for even better braking performance.

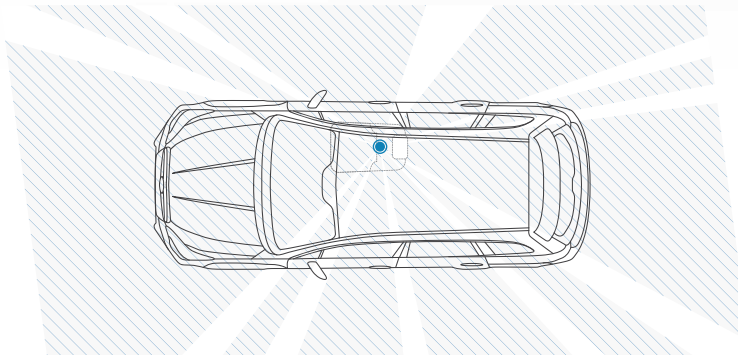


* SRS: Supplemental Restraint System. Effective when used in conjunction with seatbelts.

ACTIVE SAFETY

Visibility

With a commanding perspective and front and rear visibility at the top of its class, the Forester keeps the driver aware and at ease on narrow roads and in tight spaces. Blind spots are kept to a minimum with well-positioned A-pillars and integrated partition windows. The side mirrors have also been placed onto the door panels, creating a remarkably open field of view.



LINEUP



Crystal Black Silica

FORESTER 2.0XT

DIMENSIONS: L x W x H: 4,595 x 1,795 x 1,735 mm
ENGINE: Horizontally opposed, 4-cylinder, turbocharged, DOHC, 16-valve, petrol
CAPACITY: 1,998 cc
MAX OUTPUT: 177 kW (241 PS) / 5,600 rpm
MAX TORQUE: 350 Nm (35.7 kgfm) / 2,400-3,600 rpm
TRANSMISSION: Lineartronic, AWD



Quartz Blue Pearl

FORESTER 2.0i PREMIUM

Dimensions: L x W x H: 4,610 x 1,795 x 1,735 mm
ENGINE: Horizontally opposed, 4-cylinder, DOHC, 16-valve, petrol
CAPACITY: 1,995 cc
MAX OUTPUT: 110 kW (150 PS) / 6,200 rpm
MAX TORQUE: 198 Nm (20.2 kgfm) / 4,200 rpm
TRANSMISSION: Lineartronic, AWD



Ice Silver Metallic

FORESTER 2.0i

DIMENSIONS: L x W x H: 4,610 x 1,795 x 1,735 mm
ENGINE: Horizontally opposed, 4-cylinder, DOHC, 16-valve, petrol
CAPACITY: 1,995 cc
MAX OUTPUT: 110 kW (150 PS) / 6,200 rpm
MAX TORQUE: 198 Nm (20.2 kgfm) / 4,200 rpm
TRANSMISSION: Lineartronic, AWD

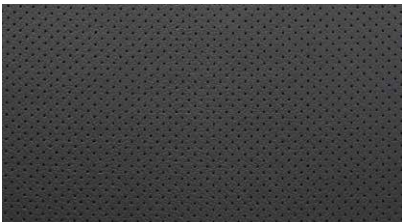


INTERIOR

LEATHER BLACK (2.0XT)



Seat Trim



Seat Backing

LEATHER PL ATINUM (2.0XT)



Seat Trim

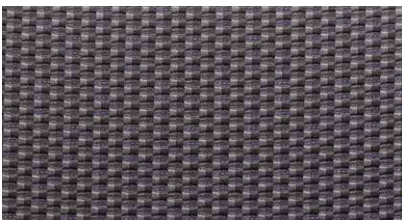


Seat Backing

FABRIC BLACK (2.0i / 2.0i PREMIUM)



Seat Trim

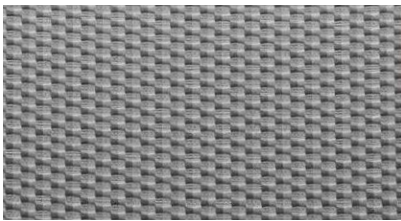


Seat Backing

FABRIC PLATINUM (2.0i / 2.0i PREMIUM)

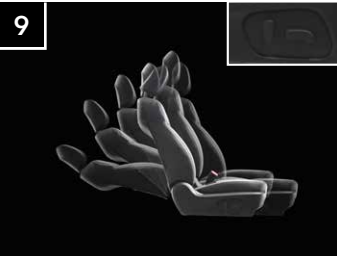


Seat Trim



Seat Backing

FEATURES



1 Steering Responsive Headlights (SRH)*
When rounding a curve at night, the illumination direction of the headlights move left or right according to the steering wheel to ensure visibility.

3 Automatic Rain-sensing Windshield Wipers*
Available automatic windshield wipers detect rainfall on the glass and adjust their wiping intervals and speed accordingly.

5 Fog Lamps*
Multi-reflector fog lamps also serve as daytime running lights and emit a wide, flat beam that reflects less glare in fog for added safety.

7 Keyless Access and Push-button Start*
Your key fob gives you easy keyless access. Simply grip the door handles to unlock them, and start the engine with a button. Even without your fob, a 5-digit PIN code can unlock the doors.

9 8-way Power Adjustable Driver's Seat*
This allows you to find a comfortable seating position by 8-way power adjustment. In models with leather interior, a 2-seat position memory function has been added.

11 One-touch Folding Switches
Switches in the cargo area automatically fold each of the 60/40-split rear seatbacks, expanding the luggage space with remarkable ease.

* Standard on 2.0i PREMIUM and 2.0XT.

2 18-inch Aluminium-alloy Wheels
2.0XT models are equipped with multi-spoke 18-inch aluminium-alloy wheels and 225/55R18 tyres.

4 Headlamp Washers*
Pop-up washers use a high-pressure spray to help keep the headlamps at their peak performance in poor weather.

6 Power Glass Sunroof*
The large, internally sliding sunroof with manual sunshade delivers a panoramic view and fresh breezes for front and rear passengers.

8 Cruise Control
Standard electronic cruise control allows the driver to maintain a preset speed on the open road. Located on the steering wheel, the controls are finished in a modern dark-metallic sheen.

10 Three 12V Power Outlets
Auxiliary power is at your fingertips with a 12-volt power outlet located in the centre console, centre console box and cargo space.

12 Dual-zone Automatic Air-conditioning System*
This feature conveniently helps keep the temperature inside where you want it. It also allows the driver and the front passenger to set different temperatures.

ACCESSORIES



Personalise your ride.

Whilst every Forester comes generously equipped, Subaru accessories are the perfect way to tailor your Subaru to your life and your style. Whether you want to add convenience, enhance functionality or personalise your Forester’s appearance, Subaru accessories are designed to provide the same fit and quality as your Subaru vehicle. For more details, ask for the accessory brochure, or visit your nearest Subaru retailer.



Splash Guard



Rubber Mat



Cargo Step Panel Resin



Tow Bar



Dog Guard



Cargo Tray Low

Please check with your local Subaru dealer for accessory applicability.

SUBARU DIGITAL EXPERIENCE

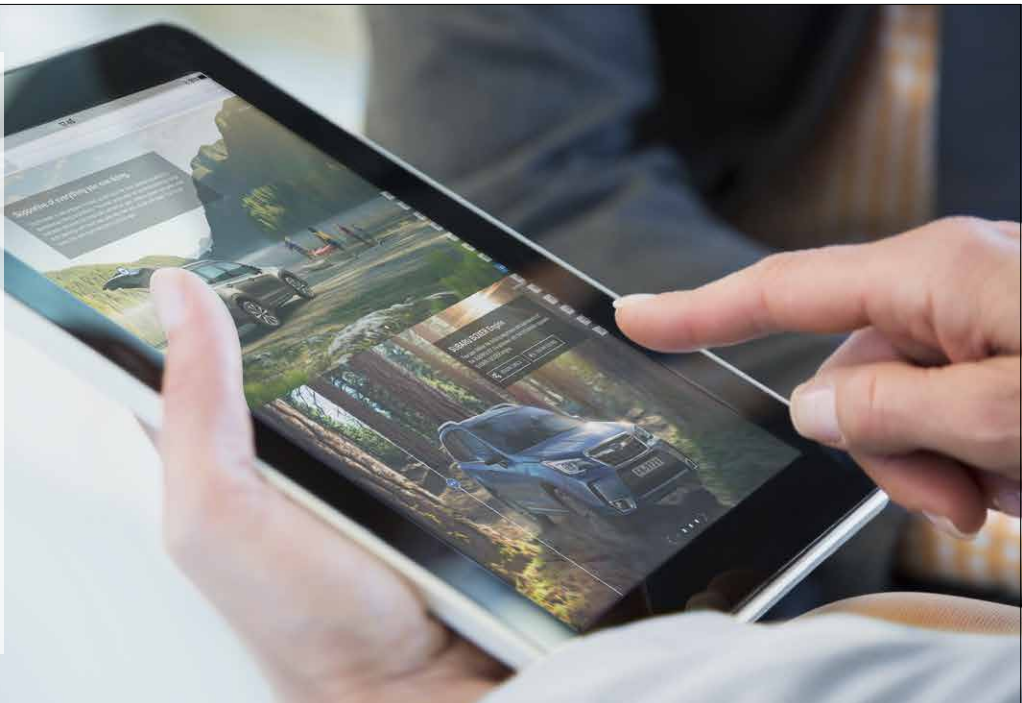
SUBARU INTERACTIVE EXPERIENCE

To help you explore all things Subaru, we offer various digital materials with a wide range of exciting, interactive content such as 360-views and videos.

eBrochure

Experience the Subaru dynamic eBrochure for more details, including videos, photos and more.

subaru-global.com/ebrochure



SUBARU
Confidence in Motion

Web Homepage

Visit our global homepage for complete information and news about Subaru and our vehicles.

subaru-global.com



YouTube

Subscribe to our channel to see all the latest videos and join the conversation about Subaru.

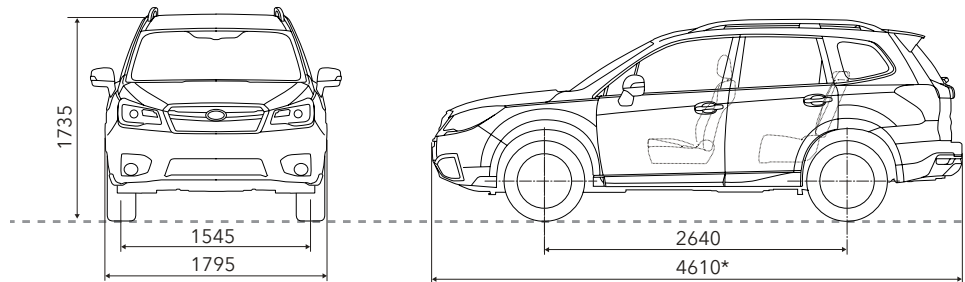
youtube.com/user/SubaruGlobalTV



Facebook

Stay connected to our diverse Subaru community, and be the first to hear the latest news directly from Subaru.

facebook.com/SUBARU.GLOBAL



Dimensions

Dimensions are measured in accordance with standard measurement of Fuji Heavy Industries Ltd.

* 2.0XT: 4595

Fuji Heavy Industries Ltd. reserves the right to alter specifications and equipment without notice. Details of specifications, equipment, colour availability and the accessory lineup are subject to suit local conditions and requirements. Please inquire at your local dealer for details of any changes that might be required for your area.



SUBARU

Confidence in Motion

FUJI HEAVY INDUSTRIES LTD.
subaru-global.com

Printed in Japan (16BR SKY 2015.12)

FORESTER

EXTERIOR COLOUR



CRYSTAL WHITE PEARL



ICE SILVER METALLIC



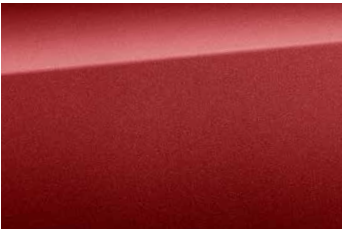
JASMINE GREEN METALLIC



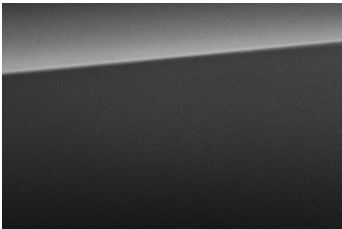
QUARTZ BLUE PEARL



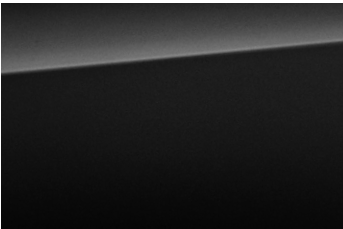
SEPIA BRONZE METALLIC



VENETIAN RED PEARL



DARK GREY METALLIC



CRYSTAL BLACK SILICA

SEAT MATERIAL

LEATHER (2.0XT)



BLACK

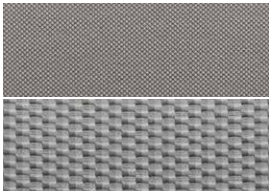


PLATINUM

FABRIC (2.0i / 2.0i PREMIUM)



BLACK



PLATINUM



SUBARU

Confidence in Motion

Owing to printing limitations, colour may differ from those shown in this chart. In addition, colours and seat variations may vary according to the individual market.

FUJI HEAVY INDUSTRIES LTD.

Printed in Japan (16CC SKY 2015.12)

FORESTER



SUBARU

Confidence in Motion



SPECIFICATIONS

Item			Symmetrical AWD (All-Wheel Drive)			
			2.0i		2.0i PREMIUM	2.0XT
			Lineartronic			
Engine						
Type			Horizontally-opposed, 4-cylinder, 4-stroke, petrol engine		Horizontally-opposed, 4-cylinder, 4-stroke, turbocharged, petrol engine	
			DOHC 16-valve			
Bore/Stroke	mm	84.0×90.0			86.0×86.0	
Capacity	cc	1,995			1,998	
Compression ratio		10.5			10.6	
Fuel system		Multi-Point Sequential Injection (Port injection)			Gasoline direct injection	
Fuel tank capacity	lit.	60				
Performance						
Max. output (DIN)	kW (PS) /rpm	110 (150) /6,200			177 (241) /5,600	
Max. torque (DIN)	Nm (kgfm) /rpm	198 (20.2) /4,200			350 (35.7) /2,400-3,600	
Max. speed	km/h	192			221	
Acceleration (0-100 km/h)	sec.	11.8			7.5	
Fuel consumption*1	Urban	lit./100 km	11.4		11.2	
	Extra-urban	lit./100 km	6.4		7.0	
	Combined	lit./100 km	8.2		8.5	
CO2 emissions*1	Urban	g/km	262		260	
	Extra-urban	g/km	147		161	
	Combined	g/km	189		197	
Drivetrain						
All-Wheel Drive type		Active Torque Split AWD system				
Dimensions & weight						
Overall length	mm	4,610			4,595	
Overall width	mm	1,795				
Overall height	mm	1,735				
Wheelbase	mm	2,640				
Track	Front	mm	1,545			
	Rear	mm	1,555			
Minimum road clearance (at kerb weight)	mm	220				
Cargo volume*2	lit.	1,548	1,548 /1,541*3		1,524*4	
Seating capacity	persons	5				
Kerb weight	kg	1,516	1,525		1,641	
Transmission						
Gear ratio	D range	3.581-0.570			3.505-0.544	
	1st	–		3.581	3.505 (S#:3.505)	
	2nd	–		2.262	2.238 (S#:2.522)	
	3rd	–		1.658	1.641 (S#:1.940)	
	4th	–		1.208	1.194 (S#:1.527)	
	5th	–		0.885	0.880 (S#:1.201)	
	6th	–		0.618	0.611 (S#:0.976)	
	7th	–			– (S#:0.800)	
	8th	–			– (S#:0.664)	
Reverse	3.667			2.345		
Final drive axle ratio		3.900			4.111	
High/Low ratio		6.282			6.443	
Chassis						
Steering		Rack and pinion, electric power steering system				
Suspension (4-wheel independent)	Front	MacPherson strut type				
	Rear	Double wishbone type				
Minimum turning circle at tyre (radius)	m	5.3				
Brakes	Front	Ventilated disc brakes				
	Rear	Solid disc brakes			Ventilated disc brakes	
Tyre/wheel size		225/60R17, 17×7"J			225/55R18, 18×7"J	

*1 Fuel consumption and CO2 emissions: According to ECE R101-01.

*2 Measured by VDA (V214).

*3 Measurement with sunroof.

*4 Measurement with sunroof & power rear gate.

Vehicle kerb weight varies according to the types of optional equipment included. Specification data and model lineup may vary according to market.

STANDARD AND OPTIONAL FEATURES

Item	2.0i	2.0i PREMIUM	2.0XT
	Lineartronic		
Exterior			
Auto on/off headlamps	–	●	●
LED headlamps with auto leveliser	–	●	●
Steering Responsive Headlight (SRH)	–	●	●
Pop-up type headlamp washers	–	●	●
Front fog lamps	–	●	●
LED rear combination lamps	●	●	●
Rear fog lamp	●	●	●
Power-folding door mirrors	●	●	●
UV protection glass: Windshield and front side windows	●	●	●
Designed blade, variable intermittent windshield wipers	●	●	●
Intermittent rear window wiper	●	●	●
Front sports bumper	–	–	●
17-inch steel wheels	●	–	–
17-inch aluminium alloy wheels	–	●	–
18-inch aluminium alloy wheels	–	–	●
Silver plated side claddings	–	–	●
Power sliding, large glass sunroof	–	●	●
Roofrails	●	●	●
Roof spoiler	●	●	●
Shark-fin antenna	●	●	●
Twin-tail muffler	–	–	●
Seating / Trims			
Leather wrapped steering wheel and gearshift knob	–	●	●
Leather seats	–	–	Option
Front seat heaters	–	Option	–
Manual seat lifter (driver's seat only)	●	–	–
8-way power adjustable driver's seat	–	●	●
Seat memory function (driver's seat)	–	–	Option
8-way power adjustable front passenger's seat	–	●	●
60/40 split folding rear seats	●	●	●
One-touch folding and reclining rear seats	–	●	●
Seatback pocket	●	●	●
Comfort / Convenience			
Power windows* ¹	●	●	●
Remote Control Key System	●	●	●
Keyless Access (touch-sensor type) and Push Button Start System	–	●	●
PIN Code Access	–	●	●
One-touch lane changer	●	●	●
Map lamps	●	●	●
Luggage space lamp	●	●	●
Vanity mirrors with lids and lamps (for driver and front passenger)	●	●	●
Over head console box	●	●	●
Centre tray	●	●	●
Centre console box	●	●	●
2 front cup holders (in the centre console)	●	●	●
2 rear cup holders (in rear seat centre armrest)	–	●	●
Door pockets with bottle holders (on all side doors)	●	●	●
Interior fuel lid lock release	●	●	●
Three 12-volt power outlets (in the instrument panel, centre console box and luggage space)	●	●	●
Power rear gate	–	–	●
4 cargo hooks	●	●	●
Luggage hooks	●	●	●
Retractable cargo cover	●	●	●

*1 Driver's and passenger's side front window has auto up/down function with pinch protection.

*2 Equipped with 7-inch WVGA centre display.

*3 Siri-compatible Apple product (iPhone, iPad, iPod touch, etc.) required

*4 Apple, iPod, Siri and iTunes are registered trademarks of Apple Inc. App Store is a service mark of Apple Inc.

*5 Bluetooth is a registered trademark of Bluetooth SIG, Inc. America.

*6 4.3-inch LCD screen displays. It shows: Fuel Economy screen, Eco-evaluation screen, Active safety, Clock/Outside temperature and Self check etc.

*7 It shows: current fuel consumption, average fuel consumption, continuous travel distance and time, average vehicle speed and ambient temperature and clock.

Item	2.0i	2.0i PREMIUM	2.0XT
	Lineartronic		
Climate control			
Automatic air-conditioning system with anti-dust filter	●	–	–
Dual-zone automatic air-conditioning system with anti-dust filter	–	●	●
Heater ducts for rear passengers	●	●	●
Windshield wiper de-icer	–	Option	–
Automatic rain-sensing windshield wipers	–	●	●
Heated door mirrors	–	Option	–
Front and side defrosters	●	●	●
Electric rear window defogger with timer	●	●	●
Entertainment			
Display audio system with 6.2-inch colour display : 1CD and 6 speakers	●	●	●
Premium audio System*2 with Harman/Kardon speakers : 1-CD and 8 speakers	–	–	Option
Voice recognition system (Command speech and One shot)	●	●	●
Siri Eyes Free*3*4	–	–	Option
Steering wheel mounted audio remote control switches	●	●	●
Bluetooth®5-compatible hands-free system	●	●	●
Single USB and auxiliary audio input jack	●	●	●
Dual USB ports and auxiliary audio input jack	–	–	Option
Rear Vision Camera	–	●	●
Control / Instruments			
High-grade type Multi-Function Display*6	–	●	●
Multi-Function Display*7	●	–	–
Tilt-adjustable/telescopic steering wheel	●	●	●
Paddle shift	–	●	●
Cruise control	●	●	●
Aluminium pedals	–	–	●
Drivability			
SI-Drive (SUBARU Intelligent Drive)*8	–	●	●
X-MODE	–	●	●
Hill Descent Control	–	●	●
Auto Vehicle Hold	●	●	●
Vehicle Dynamics Control System with OFF switch	●	●	●
Towing Vehicle Dynamics Control System	●	●	●
Self-leveliser (load-compensating rear struts)	●	●	–
Safety			
Front SRS*9 airbags	●	●	●
Front side SRS*9 airbags (for driver and front passenger)	●	●	●
Curtain SRS*9 airbags (front and rear, both sides)	●	●	●
Knee SRS*9 airbag	●	●	●
Side-door reinforcement beams (front and rear, both sides)	●	●	●
Steering column support beam	●	●	●
Whiplash reducing front seats	●	●	●
Rear seat headrests for 3 seating positions	●	●	●
Seatbelt indicator (for driver and front passenger)	●	●	●
Front seatbelts with pretensioners and load limiters	●	●	●
Height adjustable seatbelt anchors (for driver and front passenger)	●	●	●
Rear 3-point seatbelts for 3 seating positions	●	●	●
Safety pedal system	●	●	●
4-sensor/4-channel ABS with Electronic Brake-force Distribution	●	●	●
Brake assist system	●	●	●
Brake Override	●	●	●
ISO-FIX adapted child seat anchors (with tether anchors)	●	●	●
Child-proof rear door locking (both sides)	●	●	●
Engine immobiliser	●	●	●

*8 3-MODE SI-Drive (Intelligent mode, Sport mode, Sport Sharp mode) is available only on 2.0XT. Other models are available with 2-MODE SI-Drive (Intelligent mode, Sport mode).

*9 SRS: Supplemental Restraint System. Effective when used in conjunction with seatbelts.

Standard and optional features, model lineup may vary according to market.



SUBARU

Confidence in Motion

FUJI HEAVY INDUSTRIES LTD.
subaru-global.com

Printed in Japan (16SS SKY 2015.12)